



**ROW UNIT MID-MOUNT
FERTILIZER INJECTION OPENER
MODEL 2968**

SET UP & PARTS MANUAL
2565-752_REV_K • 02/2016

YETTER MANUFACTURING CO.
FOUNDED 1930

Colchester, IL 62326-0358
Toll free: 800/447-5777
309/776-3222 (Fax)
Website: www.yetterco.com
E-mail: info@yetterco.com

YETTER

FOREWORD

You've just joined an exclusive but rapidly growing club.

For our part, we want to welcome you to the group and thank you for buying a Yetter Product.

We hope your new Yetter products will help you achieve both increased productivity and increased efficiency so that you may generate more profit.

This operator's manual has been designed into six major sections: Foreword, Safety Precautions, assembly instructions, Operation, parts identification, and troubleshooting.

Throughout the manual references may be made to left side and right side. These terms are used as viewed from the operator's seat facing the front of the tractor.



This **SAFETY ALERT SYMBOL** indicates important safety messages in the manual. When you see this symbol, be alert to the possibility of **PERSONAL INJURY** and carefully read the message that follows.

The word **NOTE** is used to convey information that is out of context with the manual text. It contains special information such as specifications, techniques, reference information and other information of a supplementary nature.

The word **IMPORTANT** is used in the text when immediate damage will occur to the machine due to improper technique or operation. Important will apply to the same information as specified by note only of an immediate and urgent nature.

It is the responsibility of the user to read the operator's manual and comply with the safe and correct operating procedure and to lubricate and maintain the product according to the maintenance schedule in the operator's manual.

The user is responsible for inspecting his machine and for having parts repaired or replaced when continued use of the product would cause damage or excessive wear to the other parts.

It is the user's responsibility to deliver his machine to the Yetter dealer who sold him the product for service or replacement of defective parts that are covered by the warranty policy.

If you are unable to understand or follow the instructions provided in the publication, consult your local Yetter dealer or contact:

YETTER MANUFACTURING CO.

309/776-4111

800/447-5777

309/776-3222 (FAX)

Website: www.yetterco.com

E-mail: info@yetterco.com

WARRANTY POLICY

Yetter Manufacturing warrants all products manufactured and sold by it against defects in material. This warranty being expressly limited to replacement at the factory of such parts or products as will appear to be defective after inspection. This warranty does not obligate the Company to bear cost of labor in replacement of parts. It is the policy of the company to make improvements without incurring obligations to add them to any unit already sold. No warranty is made or authorized to be made, other than herein set forth. This warranty is in effect for one year after purchase.

DEALER _____

Yetter Manufacturing warrants its own products only and cannot be responsible for damage to equipment on which mounted.

SAFETY

A brief description of signal words that may be used in this manual:

CAUTION: Used as a general reminder of good safety practices or to direct attention to unsafe practices.

WARNING: Denotes a specific potential hazard.

DANGER: Denotes the most serious specific potential hazard.

SAFETY PRECAUTIONS

You can make your farm a safer place to live and work if you observe the safety precautions given. Study these precautions carefully and insist that they be followed by those working with you and for you.

WARNING

Never clean, lubricate or adjust a machine that is in motion. Always lower or block the implement before performing service.

If machine must be serviced in the raised position, jack or block it up to prevent it from accidentally falling and injuring someone.

Do not allow riders on the tractor or implement.

Use speeds and caution dictated by the terrain being traversed. Do not operate on any slope steep enough to cause tipping or loss of control.

Be sure all personnel are clear of the immediate area before operating.

Read and understand the operator's manual and require all other persons who will operate the equipment to do the same.

Be familiar with all tractor and implement controls and be prepared to stop engine and implements quickly in an emergency.

CAUTION

Consult your implement and tractor operator's manual for correct and safe operating practices.

Beware of towed implement width and allow safe clearance.

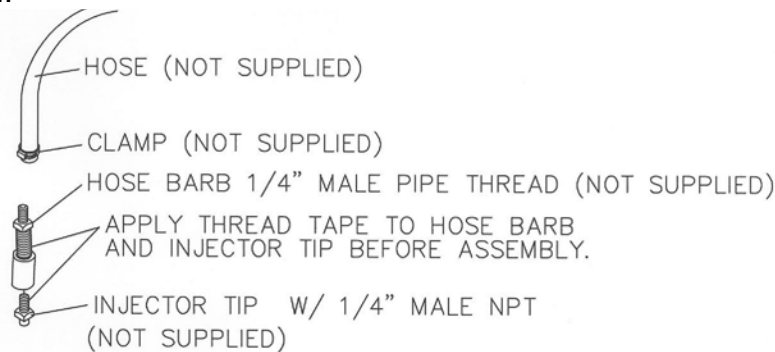
FAILURE TO HEED MAY RESULT IN PERSONEL INJURY OR DEATH.

TABLE OF CONTENTS

FOREWORD.....	2
SAFETY.....	3
INSTALLATION.....	5
PARTS IDENTIFICATION.....	6-24
OPERATION.....	25
MAINTENANCE.....	26-31
ADJUSTMENTS.....	32
LIQUID FERTILIZER APP. RATE AND PRESSURE CHART...	33
2968-030 CNH ASSEMBLY INSTRUCTIONS.....	34
2968-030 PARTS IDENTIFICATION.....	35

INSTALLATION

1. Remove the v-closing wheels, arm and support bracket from the row unit.
2. Install the Fertilizer Wheel Mounting plate.
3. Attach the v-closing wheels, arm and support to the Fertilizer Wheel Mounting plate.
4. Attach the L-mount bracket to the wheel mounting plate.
5. Assemble the Fertilizer Wheels and hubs. Insert the 'D' bolt through the hub assembly and then assemble wheel cap with 5/16" carriage bolts and locknuts.
6. Insert threaded end of 'D' bolt through 'D' hole in Fertilizer Wheel Mount Arm and secure with 5/8" lock washer and nut. Use shims to adjust the distance from seed furrow.
7. Assemble 3" stainless steel nipple, stainless steel coupler and nozzle tip (not supplied). Slide this assembly into the Combo Nipple Holder and lock into position with the 3/8" set-screw and jam nut. Injector tips can be ordered through an implement dealer or fertilizer equipment dealer. Also install the hose clamp and fertilizer hose to the pipe nipple. Calibrate the fertilizer pump and tips to maximum recommended pressure of 30 p.s.i. and minimum 20 p.s.i.



1785—HOSE BARB ASSEMBLY

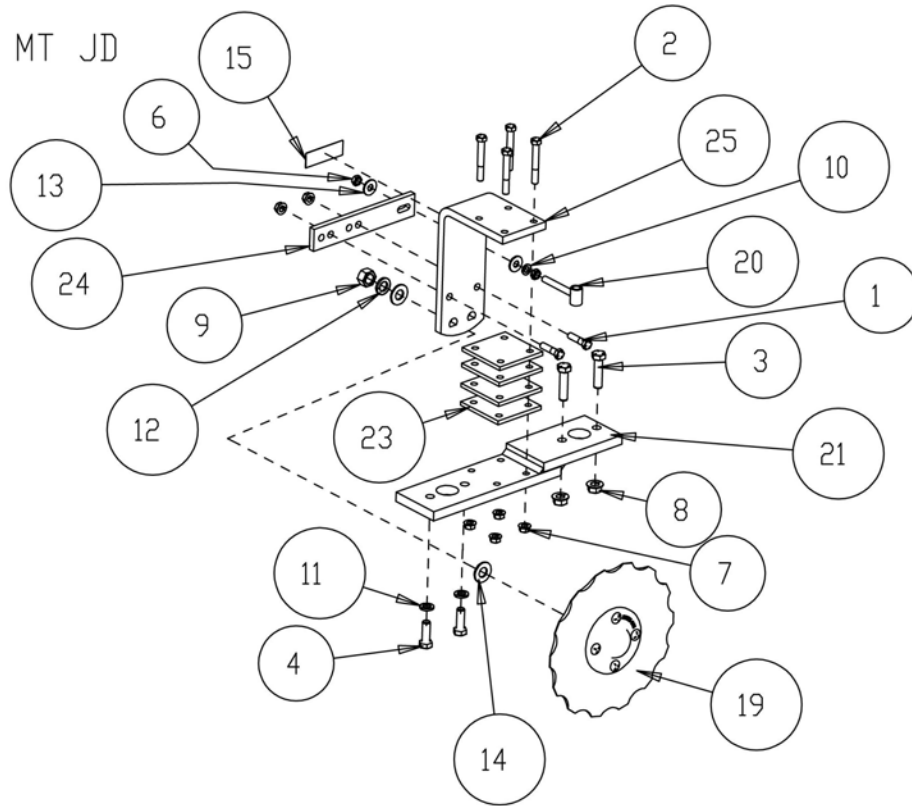
8. Thread on 1/2" nut onto Combo Nipple Holder and insert the stud through hole of Arm. Install another 1/2" nut onto stud and adjust the nozzle to be directly behind the Fertilizer Wheel. Tighten nuts securely.
9. Plumb your fertilizer lines to the attachment. **Check that hoses do not become pinched as the planter unit and v-close arm bracket moves up and down.**

IMPORTANT: It is best to consult the fertilizer supplier for optimum placement when placing starter fertilizer in close proximity to the seed.

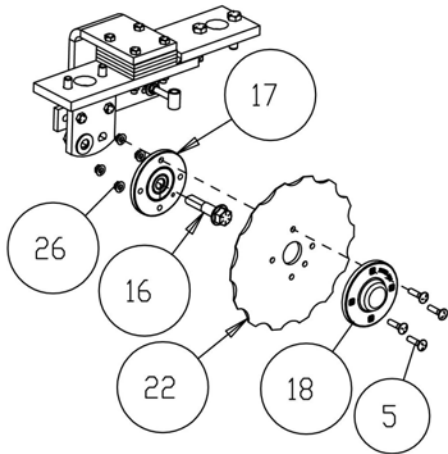
NOTE: If there is a buildup of damp soil the planter gauge wheels or opener disks, then conditions are less than "ideal" and some problems may also be encountered with Fertilizer Injection Wheel. In some situations it may be advisable to remove the Fertilizer Injection Wheel from the planter unit, if the problem continues.

PARTS IDENTIFICATION

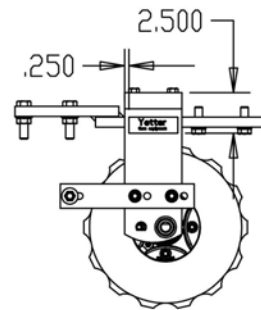
2968-020
ROW UNIT MT JD



2968-132 WHEEL ASS'Y



DECAL LOCATION



ISO-2968-020

MANUFACTURED 2/2015 - PRESENT

PARTS IDENTIFICATION

2968-020

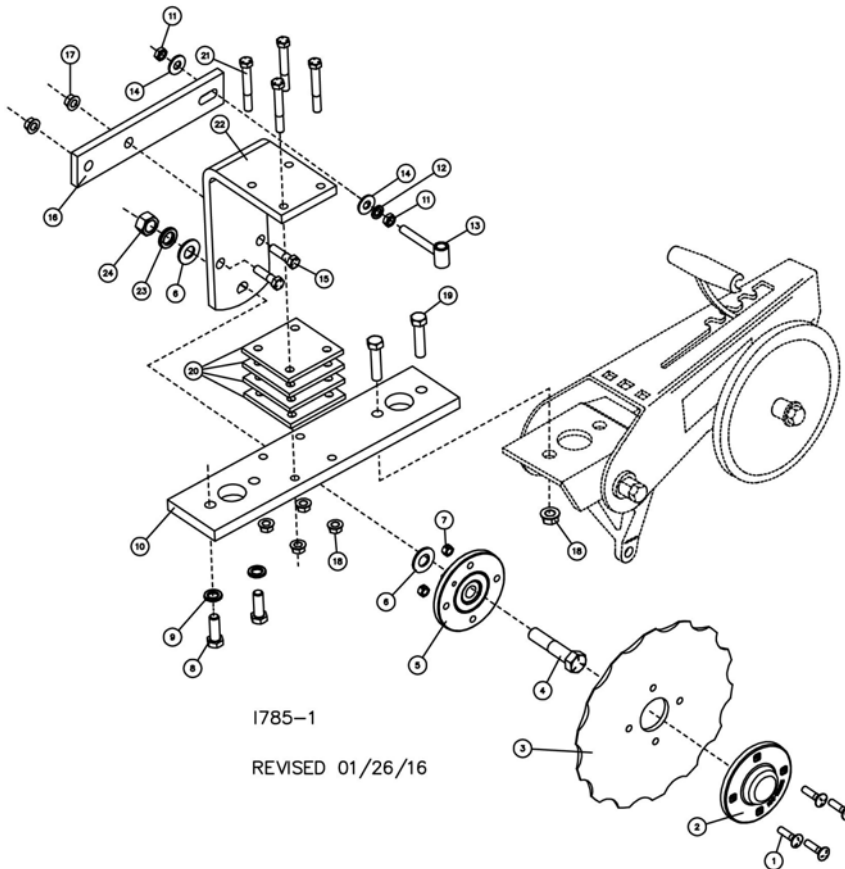
ITEM	PART #	DESCRIPTION	QTY
1	2502-232	3/8-16 X 1 1/2 HHCS GR 5 ZYD	2
2	2502-241	3/8-16 X 2 3/4 HHCS GR5 ZP	4
3	2502-351	1/2-13 X 2 HHCS GR.5 ZP	2
4	2502-379	M12 X 1.75 X 35 GRD 10.9 ZYD	2
5	2505-207	5/16-18 X 1 1/4 CARBLT G5 ZP	4
6	2520-253	3/8-16 JAM HEX NUT ZP	2
7	2520-258	3/8-16 HEX FLANGE LCK NUT ZP	6
8	2520-361	1/2-13 FLANGE WHZLCK HXNT ZP	2
9	2520-452	5/8-11 HEXNUT ZP	1
10	2525-251	3/8 MED. LOCKWASHER ZP.	1
11	2525-352	1/2 MED LOCKWASHER ZP.	2
12	2525-451	5/8 MED. LOCKWASHER ZP.	1
13	2526-251	3/8 STD FLATWASHER ZP	2
14	2526-454	5/8 SAE FLATWASHER HRD'ND YD	2
15	2565-179	YETTER DECAL 1" X 3"	1
16	2570-740	D-BOLT, FLGD, 5/8-11 X 2.812 GR. 8	1
17	2965-128	HUB & BEARING ASS'Y., 4 BOLT	1
18	2965-352	HUB CAP CASTING, 4 BOLT, BLACK	1
19	2968-132	FERTILIZER WHEEL ASS'Y	1
20	2968-218	INJECTOR HOLDER W.A.	1
21	2968-219	W.A. CLOSE WHEEL RELOCATION PLATES	1
22	2968-320	10.05 X .256 FERTILIZER WHEEL	1
23	2968-326	1/4" SHIM PLATE	4
24	2968-351	INJECTOR BRACKET	1
25	2968-354	FERT. WHEEL MOUNT 2015	1
26	N10213	5/16-18 SERRATED FLNG NTZP	4

MANUFACTURED 2/2015 - PRESENT

PARTS IDENTIFICATION

2968-020

DET	QTY	PART NO.	DESCRIPTION	DET	QTY	PART NO.	DESCRIPTION
1	4	2505-207	5/16-18 X 1-1/4 CAR BOLT GR 5	11	2	2520-253	3/8-16 JAM HEX NUT ZP
2	1	2965-352	HUB CAP CASTING, 4 BOLT, BLACK	12	1	2525-251	3/8 MED. LOCKWASHER ZP
3	1	2968-320	10.05 X .256 FERTILIZER WHEEL	13	1	2968-218	INJECTOR HOLDER W.A.
4	1	2570-740	D-BOLT, FLANGE, 5/8-11 X 2.812" GR 8	14	2	2526-251	3/8 STANDARD FLATWASHER ZP
5	1	2965-128	HUB & BEARING ASSEMBLY, 4 BOLT	15	2	2502-232	3/8-16 X 1 1/2 HHCS GR 5 ZYD
			2550-069 SEAL	16	1	2968-351	INJECTOR BRACKET
			2570-594 BEARING	17	6	2520-258	3/8-16HEX FLANGE LCK NUT ZP
			2570-715 INSERT	18	2	2520-361	1/2-13FLANGE WHZLCK HXNT ZP
			2965-351 HUB	19	2	2502-351	1/2-13 X 2 HHCS GR.5 ZP
			2533-110 ZERK	20	4	2968-326	1/4" SHIM PLATE
6	2	2526-454	5/8 SAE FLATWASHER HARD'ND	21	4	2502-241	3/8-16 X 2 3/4 HHCS GR5 ZP
7	4	N10213	5/16-18 HEX FLANGE SERRATED NUT	22	1	2968-327	FERT. WHEEL MOUNT
8	2	2502-379	M12 X 1.75 X 35 GRD 10.9	23	1	2525-451	5/8 MED LOCK WASHER ZP
9	2	2525-352	1/2 MED LOCK WASHER ZP	24	1	2520-452	5/8-11 HEX NUT ZP
10	1	2968-325	CLOSE WHEEL RELOCATION PLATE				



MANUFACTURED 07/2009 – 12/2014

PARTS IDENTIFICATION

2968-021

ITEM	PART #	DESCRIPTION	QTY
1	2502-232	3/8-16 X 1 1/2 HHCS GR 5 ZYD	3
2	2502-241	3/8-16 X 2 3/4 HHCS GR5 ZP	4
3	2502-362	1/2-13 X 5 HHCS GR. 5 ZP	1
4	2502-372	1/2-13 X 6-1/2 HHCS GR5 ZP	1
5	2505-207	5/16-18 X 1 1/4 CARBLT G5 ZP	4
6	2520-253	3/8-16 JAM HEX NUT ZP	2
7	2520-258	3/8-16 HEX FLANGE LCK NUT ZP	6
8	2520-357	1/2-13 LOCK HEX NUT ZP	2
9	2520-452	5/8-11 HEXNUT ZP	1
10	2525-251	3/8 MED. LOCKWASHER ZP.	1
11	2525-451	5/8 MED. LOCKWASHER ZP.	1
12	2526-251	3/8 STANDARD FLATWASHER ZP	2
13	2526-253	3/8 SAE FLATWASHER ZP	4
14	2526-352	1/2 SAE FLATWASHER ZP	4
15	2526-402	9/16ID X 1-3/4 OD X 1/4MBZP	2
16	2526-454	5/8 SAE FLATWASHER HRD'ND YD	2
17	2565-179	YETTER DECAL 1" X 3"	1
18	2570-740	D-BOLT, FLGD, 5/8-11 X 2.812 GR. 8	1
19	2965-128	HUB & BEARING ASS'Y., 4 BOLT	1
20	2965-352	HUB CAP CASTING, 4 BOLT, BLACK	1
21	2968-132	FERTILIZER WHEEL ASS'Y	1
22	2968-213	CLOSE WHEEL MOUNT PLATE W.A.	1
23	2968-218	INJECTOR HOLDER W.A.	1
24	2968-320	10.05 X .256 FERTILIZER WHEEL	1
25	2968-326	1/4" SHIM PLATE	4
26	2968-351	INJECTOR BRACKET	1
27	2968-354	FERT. WHEEL MOUNT 2015	1
28	N10213	5/16-18 SERRATED FLNG NTZP	4

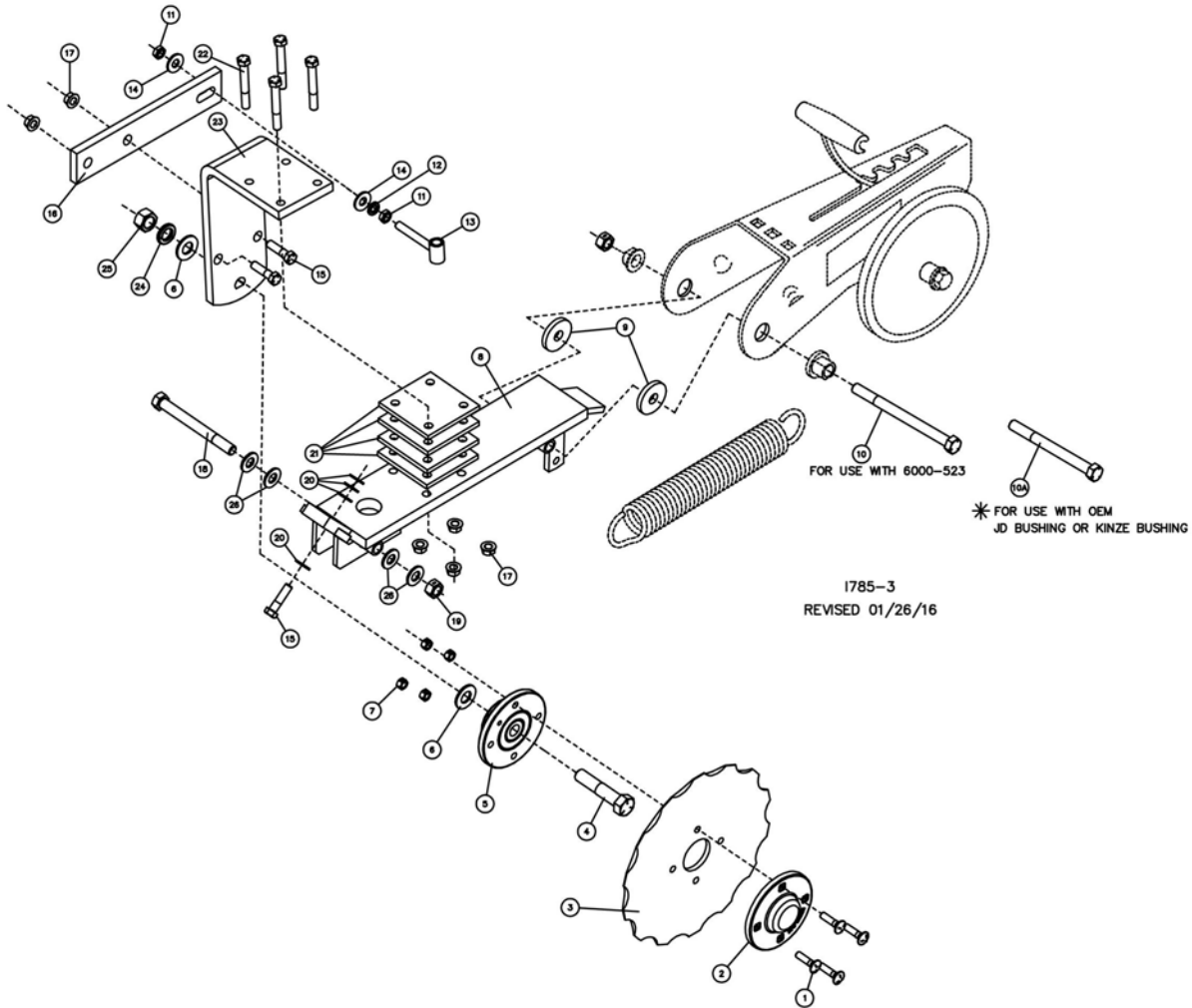
WHEN MOUNTING TO OEM JD OR KINZE BUSHINGS
USE THE PROVIDED 2502-368, 1/2 X 5-1/2 GR5 BOLT

MANUFACTURED 2/2015 - PRESENT

PARTS IDENTIFICATION

2968-021

DET	QTY	PART NO.	DESCRIPTION	DET	QTY	PART NO.	DESCRIPTION
1	4	2505-207	5/16-18 X 1-1/4 CAR BOLT GR 5	11	2	2520-253	3/8-16 JAM HEX NUT ZP
2	1	2965-352	HUB CAP CASTING, 4 BOLT, BLACK	12	1	2525-251	3/8 MED. LOCKWASHER ZP
3	1	2968-320	10.05 X .256 FERTILIZER WHEEL	13	1	2968-218	INJECTOR HOLDER W.A.
4	1	2570-740	D-BOLT, FLANGE, 5/8-11 X 2.812" GR 8	14	2	2526-251	3/8 STANDARD FLATWASHER
5	1	2965-128	HUB & BEARING ASSEMBLY, 4 BOLT 2550-069 SEAL 2570-594 BEARING 2570-715 INSERT 2965-351 HUB 2533-110 ZERK	15	2	2502-232	3/8-16 X 1 1/2 HHCS GR 5
6	2	2526-454	5/8 SAE FLATWASHER HARD'ND	16	1	2968-351	INJECTOR BRACKET
7	4	N10213	5/16-18 HEX FLANGE SERRATED NUT	17	6	2520-258	3/8-16 HEX FLANGE LCK NUT ZP
8	1	2968-213	CLOSE WHEEL MOUNT PLATE	18	1	2502-362	1/2-13 X 5 HHCS GR5
9	2	2526-402	9/16ID X 1-3/4OD X 1/4 MB	19	2	2520-357	1/2-13 LOCK HEX NUT ZP
10	1	2502-372	1/2-13 X 6-1/2 HHCS GR 5 ZP	20	4	2526-253	3/8 SAE FLATWASHER ZP
*10A	1	2502-368	1/2-13 X 5-1/2 HHCS GR 5 ZP	21	4	2968-326	1/4" SHIM PLATE
				22	4	2502-241	3/8-16 X 2-3/4 HHCS GR 5 ZP
				23	1	2968-327	FERT. WHEEL MOUNT
				24	1	2525-451	5/8 MED LOCK WASHER ZP
				25	1	2520-452	5/8-11 HEX NUT ZP
				26	4	2526-352	1/2 SAE FLATWASHER

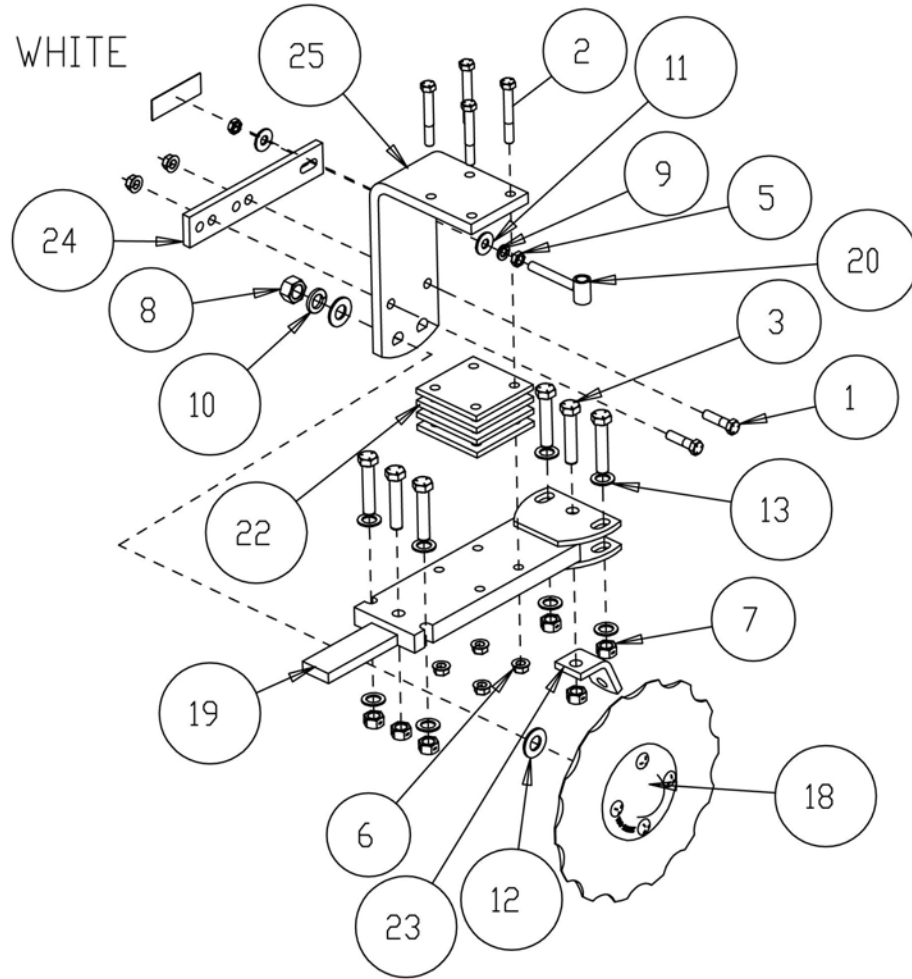


MANUFACTURED 07/2009 – 12/2014

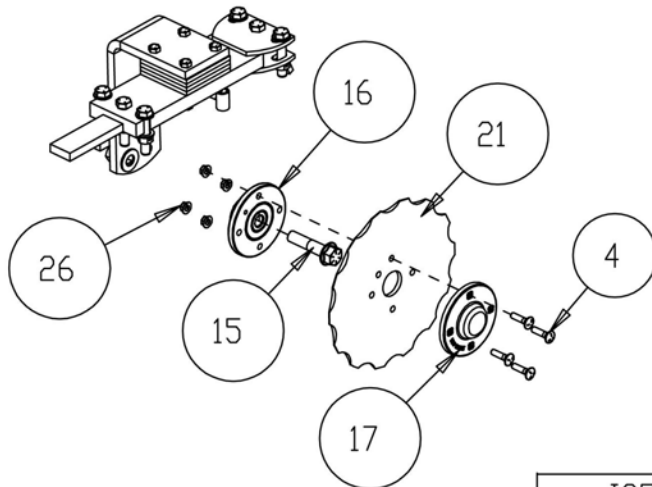
PARTS IDENTIFICATION

2968-022

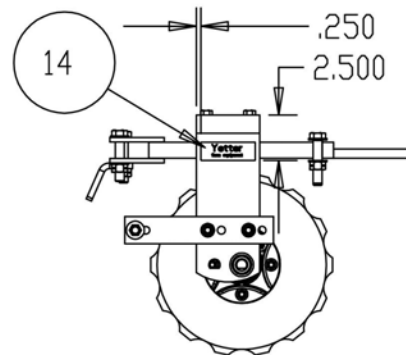
ROW UNIT MT WHITE



2968-132 WHEEL ASS'Y



DECAL LOCATION



ISO-2968-022

MANUFACTURED 2/2015 - PRESENT

PARTS IDENTIFICATION

2968-022

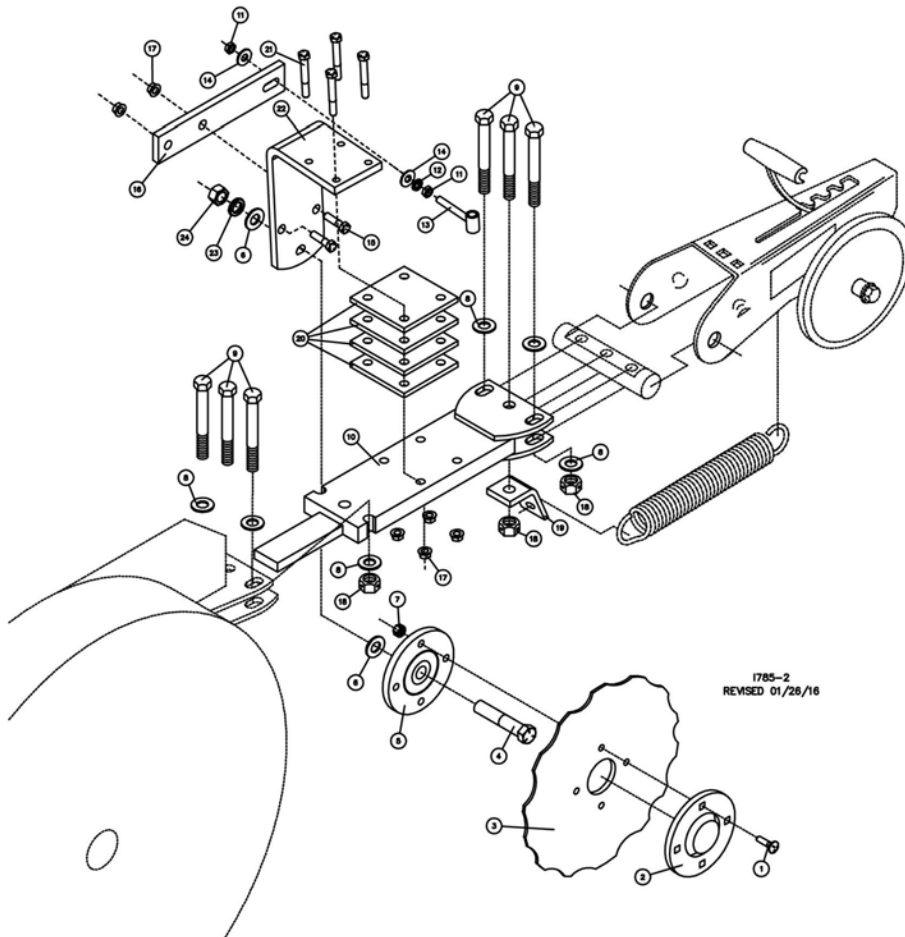
ITEM	PART #	DESCRIPTION	QTY
1	2502-232	3/8-16 X 1 1/2 HHCS GR 5 ZYD	2
2	2502-241	3/8-16 X 2 3/4 HHCS GR5 ZP	4
3	2502-296	1/2-13 X 2-1/2 HHCS GR5 ZP	6
4	2505-207	5/16-18 X 1 1/4 CARBLT G5 ZP	4
5	2520-253	3/8-16 JAM HEX NUT ZP	2
6	2520-258	3/8-16 HEX FLANGE LCK NUT ZP	6
7	2520-357	1/2-13 LOCK HEX NUT ZP	6
8	2520-452	5/8-11 HEXNUT ZP	1
9	2525-251	3/8 MED. LOCKWASHER ZP.	1
10	2525-451	5/8 MED. LOCKWASHER ZP.	1
11	2526-251	3/8 STANDARD FLATWASHER ZP	2
12	2526-454	5/8 SAE FLATWASHER HRD'ND YD	2
13	2527-563	5/8 ID X 1" OD X 14 GA MACH BU	8
14	2565-179	YETTER DECAL 1" X 3"	1
15	2570-740	D-BOLT, FLGD, 5/8-11 X 2.812 GR. 8	1
16	2965-128	HUB & BEARING ASS'Y., 4 BOLT	1
17	2965-352	HUB CAP CASTING, 4 BOLT, BLACK	1
18	2968-132	FERTILIZER WHEEL ASS'Y	1
19	2968-215	CLOSING WHEEL MOUNT PLATE W.A.	1
20	2968-218	INJECTOR HOLDER W.A.	1
21	2968-320	10.05 X .256 FERTILIZER WHEEL	1
22	2968-326	1/4" SHIM PLATE	4
23	2968-334	SPRING ANCHOR TAB	1
24	2968-351	INJECTOR BRACKET	1
25	2968-354	FERT. WHEEL MOUNT 2015	1
26	N10213	5/16-18 SERRATED FLNG NTZP	4

MANUFACTURED 2/2015 - PRESENT

PARTS IDENTIFICATION

2968-022

DET	QTY	PART NO.	DESCRIPTION	DET	QTY	PART NO.	DESCRIPTION
1	4	2505-207	5/16-18 X 1-1/4 CAR BOLT GR 5	10	1	2968-215	CLOSING WHEEL MOUNT PLATE
2	1	2965-352	HUB CAP CASTING, 4 BOLT, BLACK	11	2	2520-253	3/8-16 JAM HEX NUT ZP
3	1	2968-320	10.05 X .256 FERTILIZER WHEEL	12	1	2525-251	3/8 MED. LOCKWASHER ZP
4	1	2570-740	D-BOLT, FLANGE, 5/8-11 X 2.812" GR 8	13	1	2968-218	INJECTOR HOLDER W.A.
5	1	2965-128	HUB & BEARING ASSEMBLY, 4 BOLT	14	2	2526-251	3/8 STANDARD FLATWASHER
			2550-069 SEAL	15	2	2502-232	3/8-16 X 1 1/2 HHCS GR 5
			2570-594 BEARING	16	1	2968-351	INJECTOR BRACKET
			2570-715 INSERT	17	6	2520-258	3/8-16HEX FLANGE LCK NUT ZP
			2965-351 HUB	18	6	2520-357	1/2-13 LOCK HEX NUT ZP
			2533-110 ZERK	19	1	2968-334	SPRING ANCHOR TAB
6	2	2526-454	5/8 SAE FLATWASHER HARD'ND	20	4	2968-326	1/4" SHIM PLATE
7	4	N10213	5/16-18 HEX FLANGE SERRATED NUT	21	4	2502-241	3/8-16 X 2 3/4 HHCS GR 5 ZP
8	8	2526-355	1/2 FLAT WASHER HARD'ND ZYD	22	1	2968-327	FERT. WHEEL MOUNT
9	6	2502-296	1/2-13 X 2-1/2 HHCS GR 5 ZP	23	1	2525-451	5/8 MED LOCK WASHER ZP
				24	1	2520-452	5/8-11 HEX NUT ZP



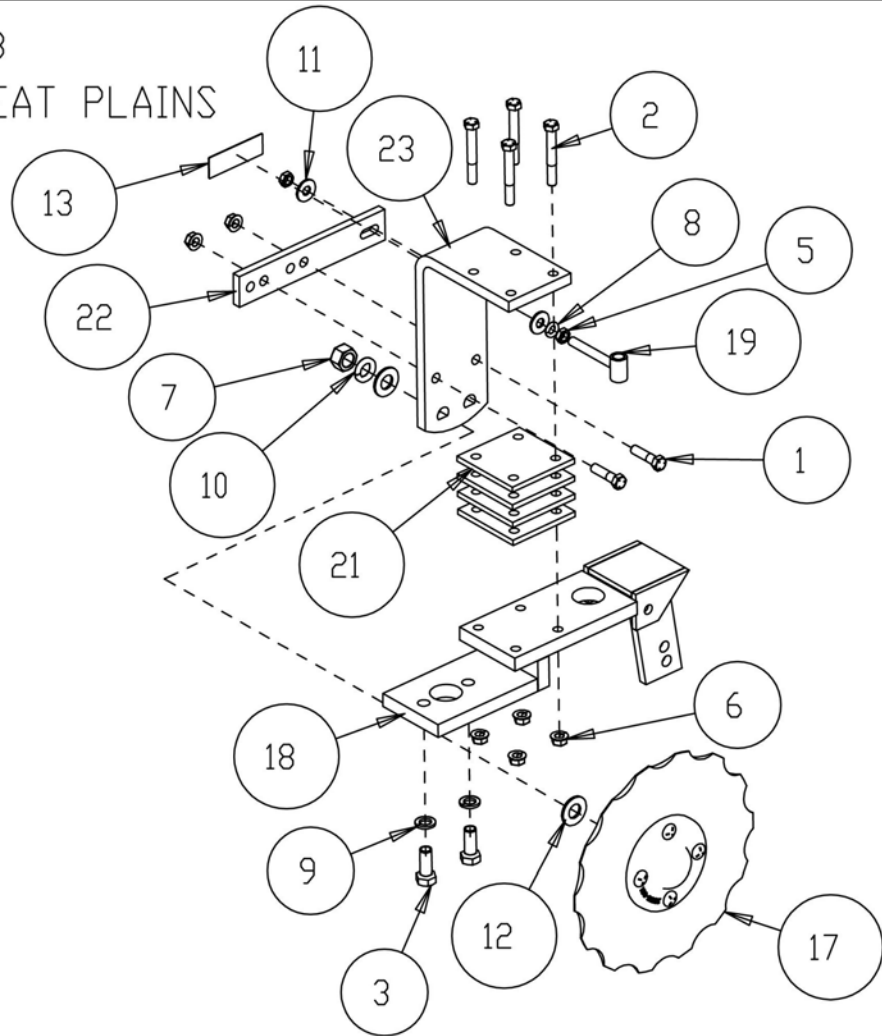
1785-2
REVISED 01/28/16

MANUFACTURED 07/2009 – 12/2014

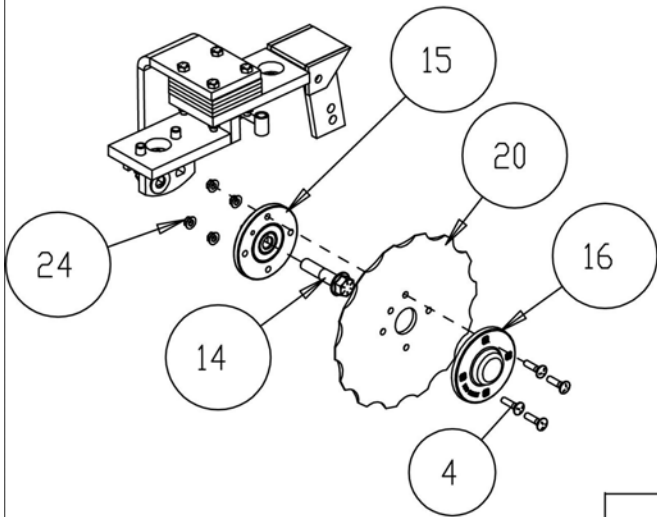
PARTS IDENTIFICATION

2968-023

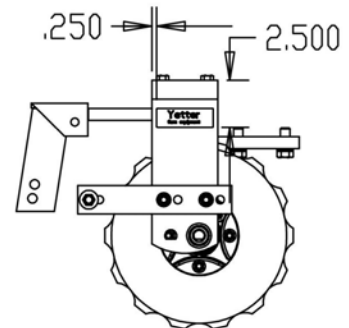
ROW UNIT MT GREAT PLAINS



2968-132 WHEEL ASS'Y



DECAL LOCATION



ISO-2968-023

MANUFACTURED 2/2015 - PRESENT

PARTS IDENTIFICATION

2968-023

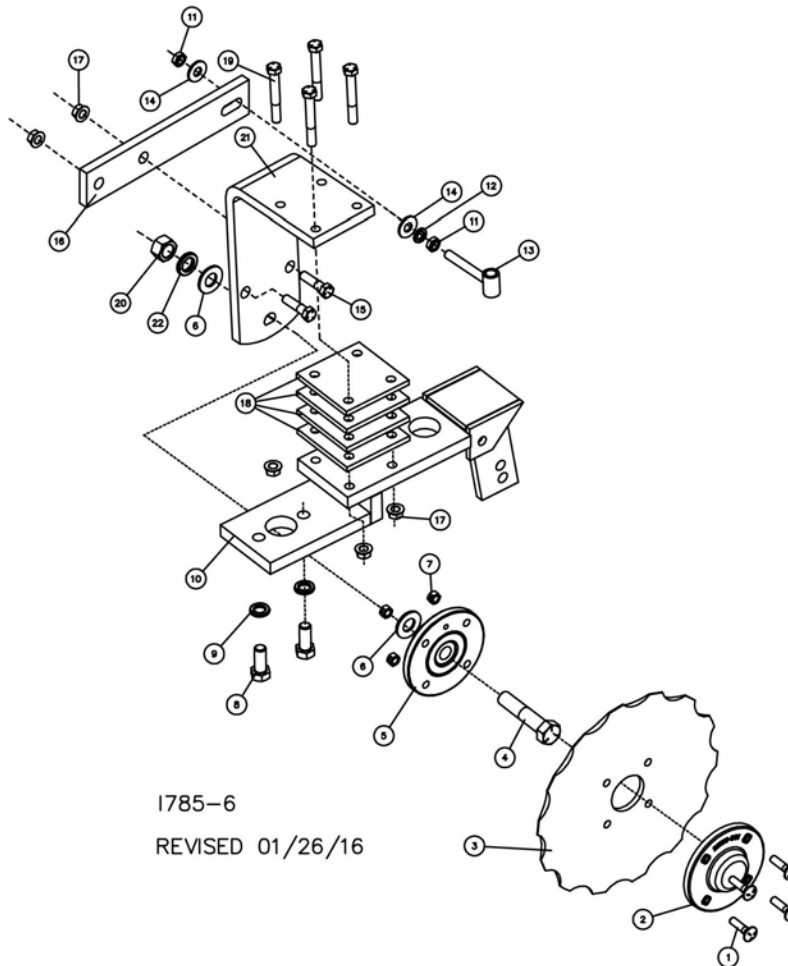
ITEM	PART #	DESCRIPTION	QTY
1	2502-232	3/8-16 X 1 1/2 HHCS GR 5 ZYD	2
2	2502-241	3/8-16 X 2 3/4 HHCS GR5 ZP	4
3	2502-293	1/2-13 X 1-1/4 HHCS GR5 YD	2
4	2505-207	5/16-18 X 1 1/4 CARBLT G5 ZP	4
5	2520-253	3/8-16 JAM HEX NUT ZP	2
6	2520-258	3/8-16 HEX FLANGE LCK NUT ZP	6
7	2520-452	5/8-11 HEXNUT ZP	1
8	2525-251	3/8 MED. LOCKWASHER ZP.	1
9	2525-352	1/2 MED LOCKWASHER ZP.	2
10	2525-451	5/8 MED. LOCKWASHER ZP.	1
11	2526-251	3/8 STANDARD FLATWASHER ZP	2
12	2526-454	5/8 SAE FLATWASHER HRD'ND YD	2
13	2565-179	YETTER DECAL 1" X 3"	1
14	2570-740	D-BOLT, FLGD, 5/8-11 X 2.812 GR. 8	1
15	2965-128	HUB & BEARING ASS'Y., 4 BOLT	1
16	2965-352	HUB CAP CASTING, 4 BOLT, BLACK	1
17	2968-132	FERTILIZER WHEEL ASS'Y	1
18	2968-217	CLOSE WHEEL RELOCATION PLATE, GP	1
19	2968-218	INJECTOR HOLDER W.A.	1
20	2968-320	10.05 X .256 FERTILIZER WHEEL	1
21	2968-326	1/4" SHIM PLATE	4
22	2968-351	INJECTOR BRACKET	1
23	2968-354	FERT. WHEEL MOUNT 2015	1
24	N10213	5/16-18 SERRATED FLNG NTZP	4

MANUFACTURED 2/2015 - PRESENT

PARTS IDENTIFICATION

2968-023

DET	QTY	PART NO.	DESCRIPTION	DET	QTY	PART NO.	DESCRIPTION
1	4	2505-207	5/16-18 X 1-1/4 CAR BOLT GR 5	9	2	2525-352	1/2 MED LOCK WASHER ZP
2	1	2965-352	HUB CAP CASTING, 4 BOLT, BLACK	10	1	2968-217	CLOSE WHL RELOCATION PLATE,GP
3	1	2968-320	10.05 X .256 FERTILIZER WHEEL	11	2	2520-253	3/8-16 JAM HEX NUT ZP
4	1	2570-740	D-BOLT, FLANGE, 5/8-11 X 2.812" GR 8	12	1	2525-251	3/8 MED. LOCKWASHER ZP
5	1	2965-128	HUB & BEARING ASSEMBLY, 4 BOLT	13	1	2968-218	INJECTOR HOLDER W.A.
		2550-069	SEAL	14	1	2526-251	3/8 STANDARD FLATWASHER ZP
		2570-594	BEARING	15	2	2502-232	3/8-16 X 1 1/2 HHCS GR 5 ZYD
		2570-715	INSERT	16	1	2968-351	INJECTOR BRACKET
		2965-351	HUB	17	6	2520-258	3/8-16HEX FLANGE LCK NUT ZP
		2533-110	ZERK	18	4	2968-326	1/4" SHIM PLATE
6	2	2526-454	5/8 SAE FLATWASHER HARD'ND	19	4	2502-241	3/8-16 X 2 3/4 HHCS GR5
7	4	N10213	5/16-18 HEX FLANGE SERRATED NUT	20	1	2520-452	5/8-11 HEX NUT ZP
8	2	2502-293	1/2-13 X 1-1/4 HHCS GR5 YD	21	1	2968-327	FERT. WHEEL MOUNT
				22	1	2525-451	5/8 MED LOCK WASHER ZP

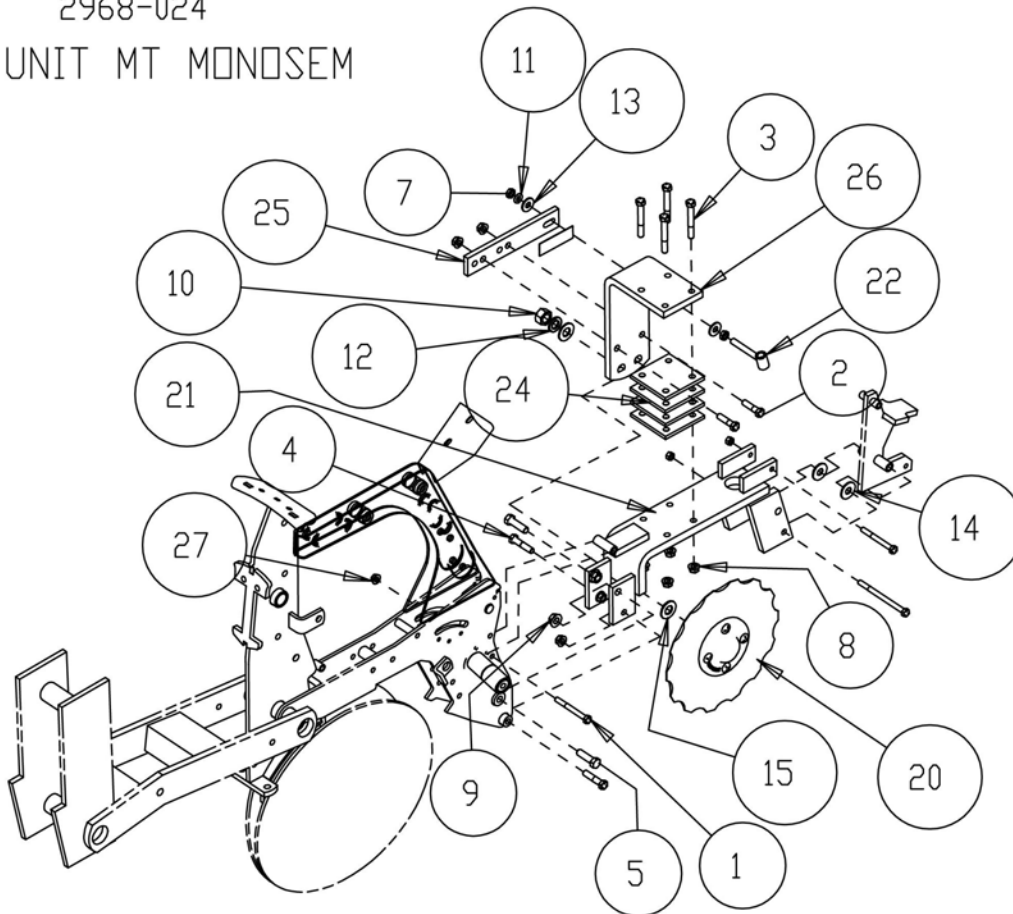


MANUFACTURED 07/2009 – 12/2014

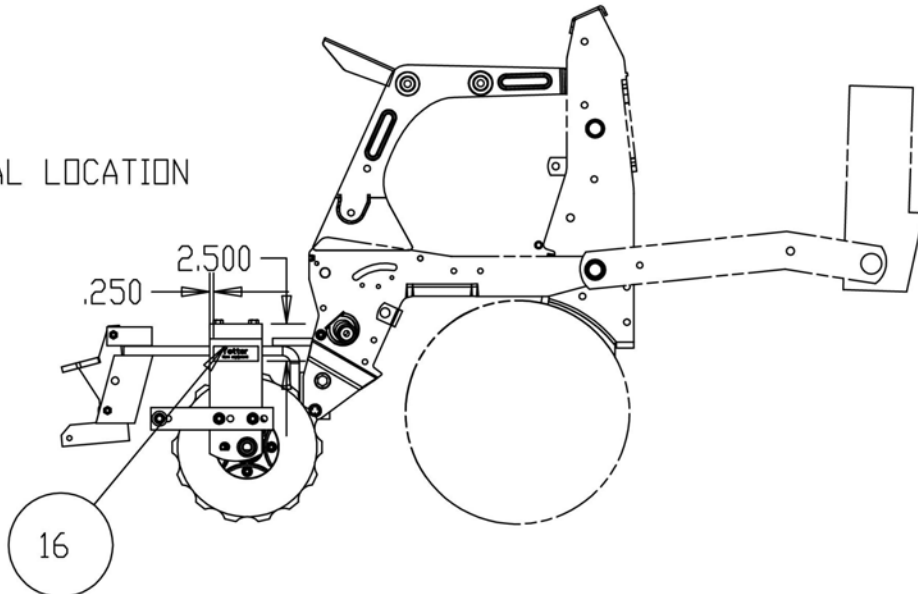
PARTS IDENTIFICATION

2968-024

ROW UNIT MT MONOSEM



DECAL LOCATION



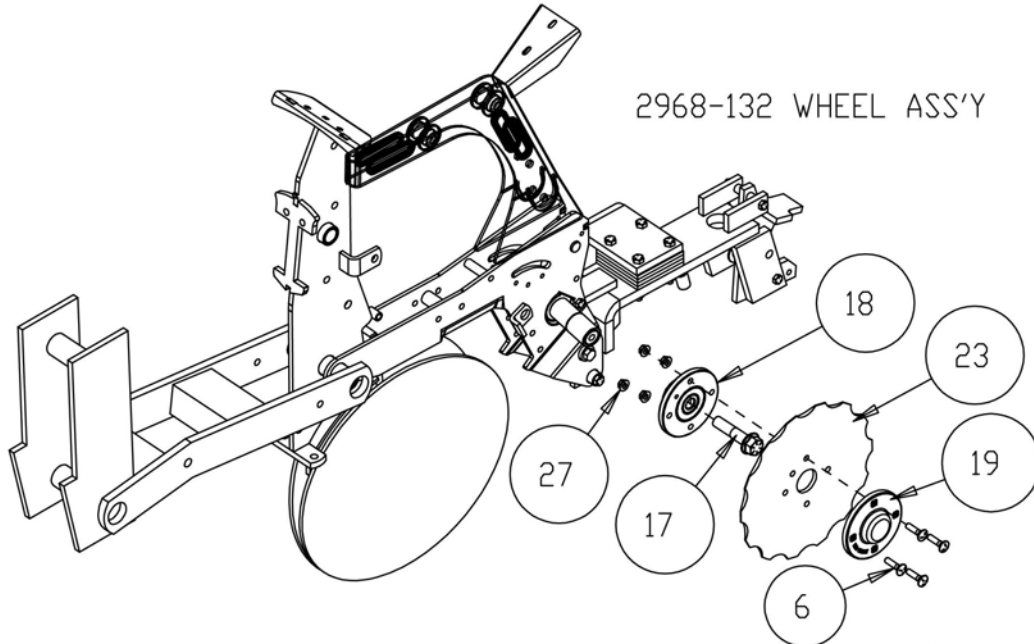
ISO-2968-024

MANUFACTURED 2/2015 - PRESENT

PARTS IDENTIFICATION

2968-024

ITEM	PART #	DESCRIPTION	QTY
1	2502-216	5/16-18 X 3 HHCS GR 5 ZP	2
2	2502-232	3/8-16 X 1 1/2 HHCS GR 5 ZYD	2
3	2502-241	3/8-16 X 2 3/4 HHCS GR5 ZP	4
4	2502-245	3/8-16 X 1-3/4 HHCS GR 5 ZP	2
5	2502-266	7/16-14X1-1/2 HHCS GR 5 YD	2
6	2505-207	5/16-18 X 1 1/4CARBLT G5 ZP	4
7	2520-253	3/8-16 JAM HEX NUT ZP	2
8	2520-258	3/8-16HEX FLANGE LCK NUT ZP	8
9	2520-307	7/16-14 FLANGE LOCK NUT	2
10	2520-452	5/8-11 HEXNUT ZP	1
11	2525-251	3/8 MED. LOCKWASHER ZP.	1
12	2525-451	5/8 MED. LOCKWASHER ZP.	1
13	2526-251	3/8 STD FLATWASHER ZP	2
14	2526-301	7/16 STD. FLATWASHER ZP	2
15	2526-454	5/8 SAE FLATWASHER HRD'ND YD	2
16	2565-179	YETTER DECAL 1" X 3"	1
17	2570-740	D-BOLT, FLGD, 5/8-11 X 2.812 GR. 8	1
18	2965-128	HUB & BEARING ASS'Y., 4 BOLT	1
19	2965-352	HUB CAP CASTING, 4 BOLT, BLACK	1
20	2968-132	FERTILIZER WHEEL ASS'Y	1
21	2968-216	CLOSE WHEEL RELOCATION PLATE, MSM	1
22	2968-218	INJECTOR HOLDER W.A.	1
23	2968-320	10.05 X .256 FERTILIZER WHEEL	1
24	2968-326	1/4" SHIM PLATE	4
25	2968-351	INJECTOR BRACKET	1
26	2968-354	FERT. WHEEL MOUNT 2015	1
27	N10213	5/16-18 SERRATED FLNG NTZP	5



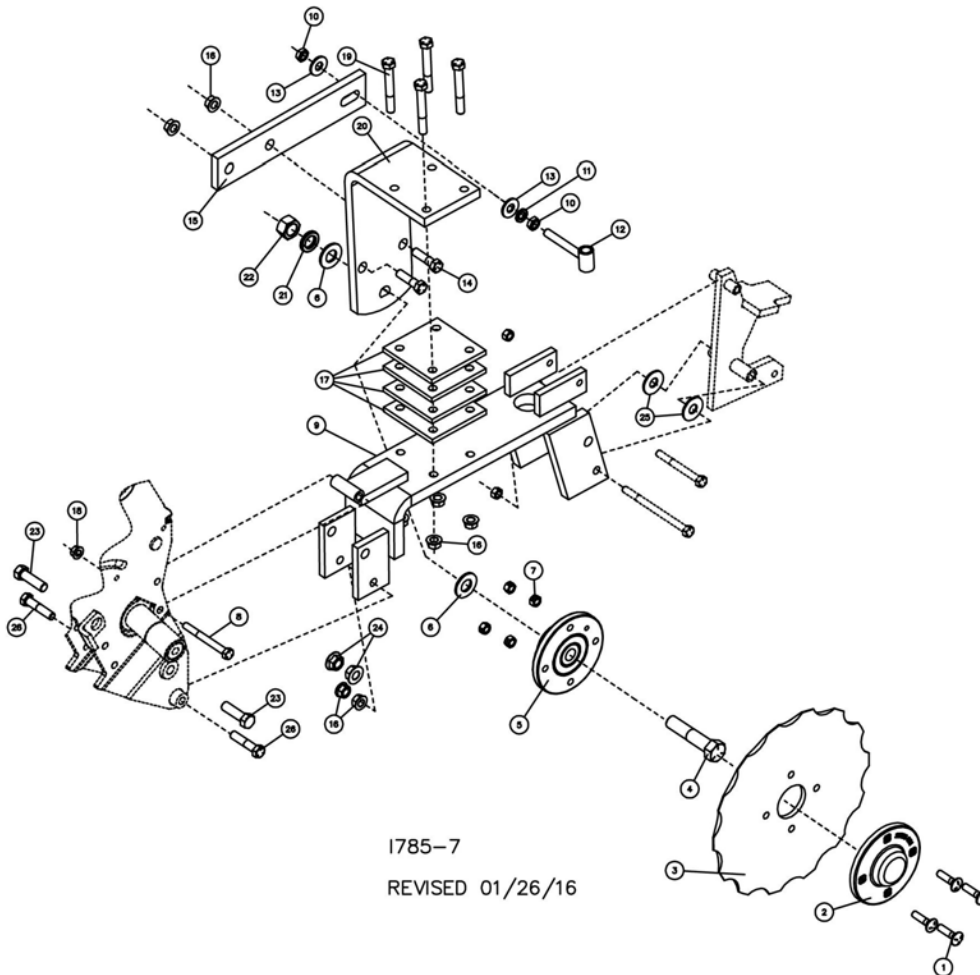
MANUFACTURED 2/2015 - PRESENT

PARTS IDENTIFICATION

2968-024

Monosem

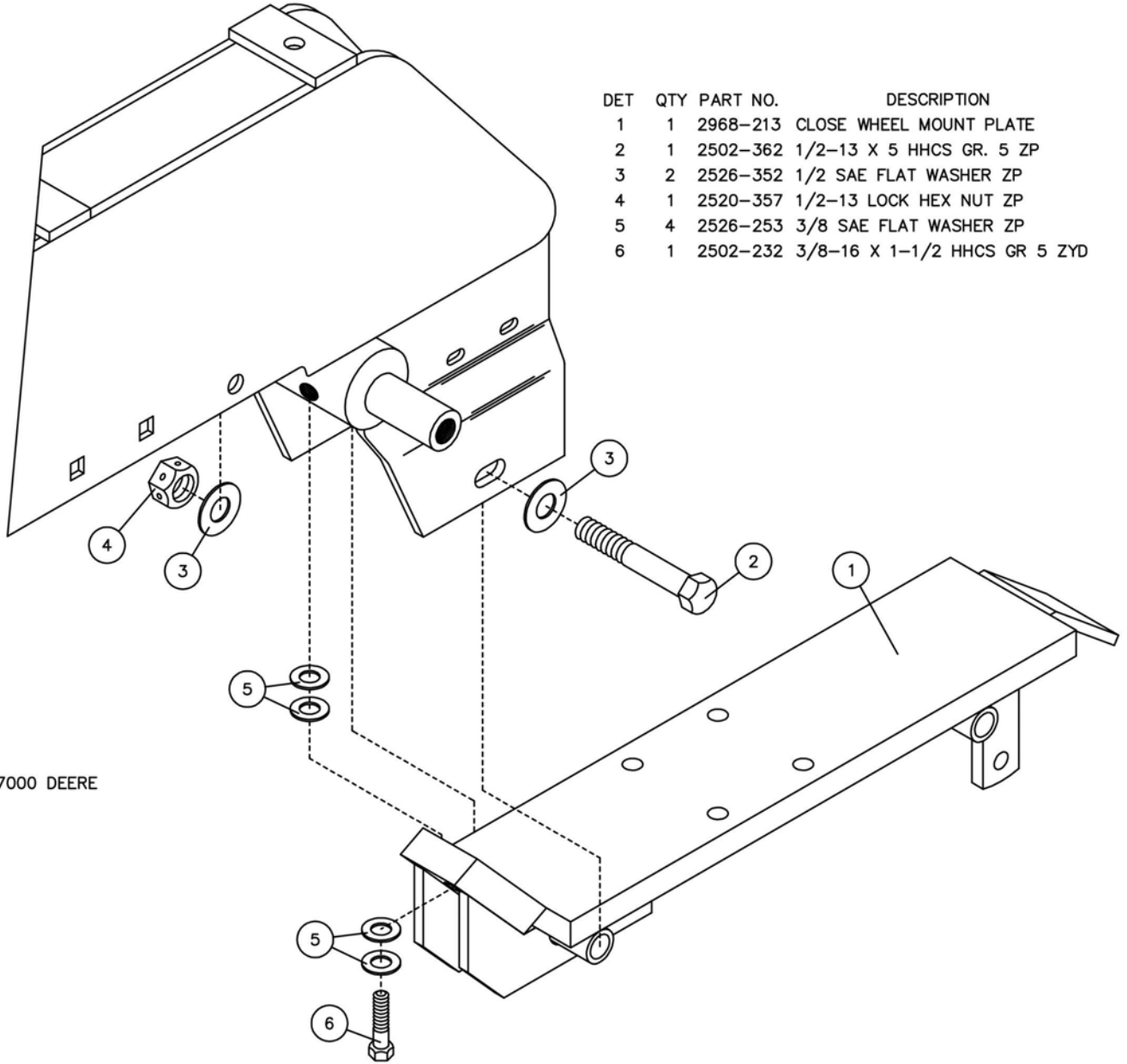
DET	QTY	PART NO.	DESCRIPTION	DET	QTY	PART NO.	DESCRIPTION
1	4	2505-207	5/16-18 X 1-1/4 CAR BOLT GR 5	12	1	2968-218	INJECTOR HOLDER W.A.
2	1	2965-352	HUB CAP CASTING, 4 BOLT, BLACK	13	1	2526-251	3/8 STANDARD FLATWASHER ZP
3	1	2968-320	10.05 X .256 FERTILIZER WHEEL	14	2	2502-232	3/8-16 X 1 1/2 HHCS GR 5 ZYD
4	1	2570-740	D-BOLT, FLANGE, 5/8-11 X 2.812" GR 8	15	1	2968-351	INJECTOR BRACKET
5	1	2965-128	HUB & BEARING ASSEMBLY, 4 BOLT	16	8	2520-258	3/8-16HEX FLANGE LCK NUT ZP
			2550-069 SEAL	17	4	2968-326	1/4" SHIM PLATE
			2570-594 BEARING	18	1	2520-206	5/8-18 FLANGE LOCK NUT
			2570-715 INSERT	19	4	2502-241	3/8-16 X 2 3/4 HHCS GR5 ZP
			2965-351 HUB	20	1	2968-327	FERT. WHEEL MOUNT
			2533-110 ZERK	21	1	2525-451	5/8 MED LOCK WASHER ZP
6	2	2526-454	5/8 SAE FLATWASHER HARD'ND	22	1	2520-452	5/8-11 HEX NUT ZP
7	4	N10213	5/16-18 HEX FLANGE SERRATED NUT	23	2	2502-266	7/16-14 X 1-1/2 HHCS GR 5
8	1	2502-216	5/16-18 X 3 HHCS GR 5 ZP	24	2	2520-307	7/16-14 FLANGE WHZLOCK HX
9	1	2968-216	CLOSE WHL RELOCATION PLATE,MSM	25	2	2526-301	7/16 STD. FLATWASHER HRD'ND
10	2	2520-253	3/8-16 JAM HEX NUT ZP	26	2	2502-245	3/8-16 X 1-3/4 HHCS GR 5 ZP
11	1	2525-251	3/8 MED. LOCKWASHER ZP				



MANUFACTURED 07/2009 – 12/2014

PARTS IDENTIFICATION

7000 DEERE / 2000 KINZE

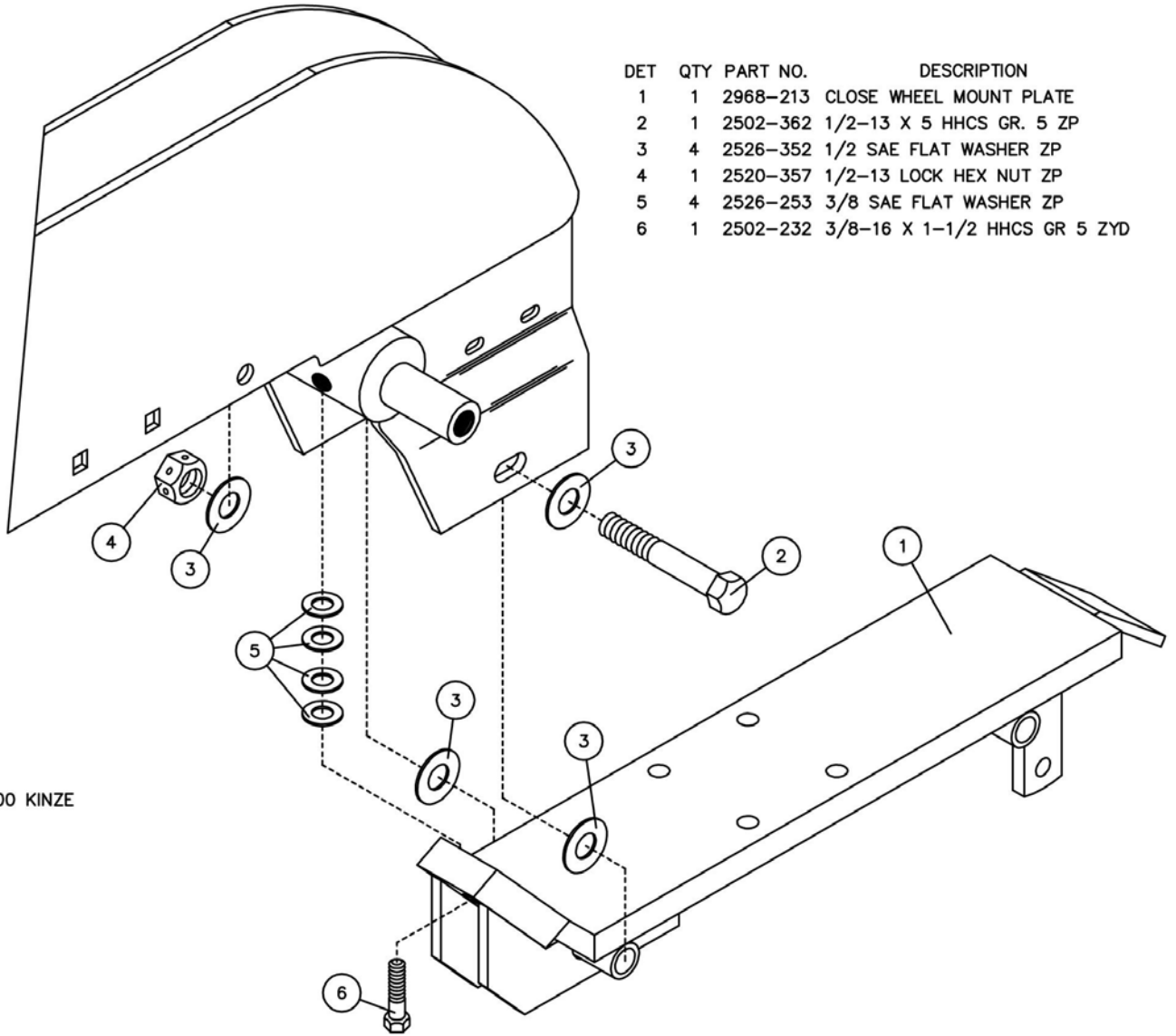


DET	QTY	PART NO.	DESCRIPTION
1	1	2968-213	CLOSE WHEEL MOUNT PLATE
2	1	2502-362	1/2-13 X 5 HHCS GR. 5 ZP
3	2	2526-352	1/2 SAE FLAT WASHER ZP
4	1	2520-357	1/2-13 LOCK HEX NUT ZP
5	4	2526-253	3/8 SAE FLAT WASHER ZP
6	1	2502-232	3/8-16 X 1-1/2 HHCS GR 5 ZYD

L669-7000 DEERE

PARTS IDENTIFICATION

3000 KINZE

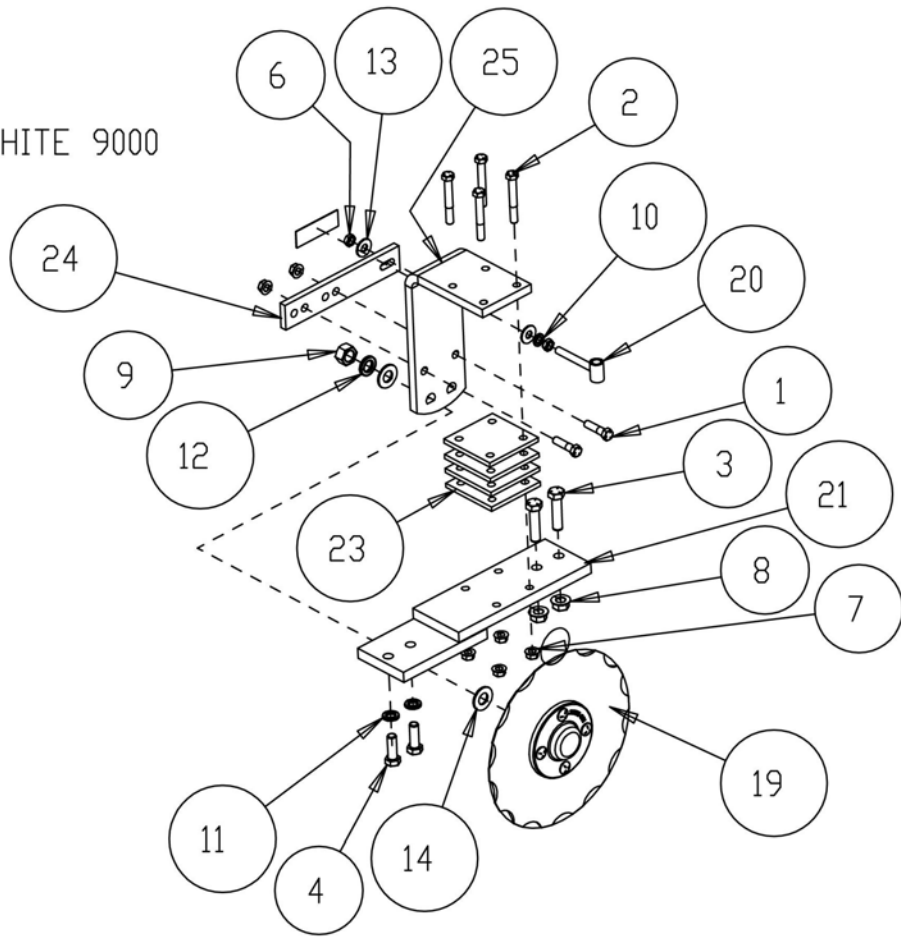


DET	QTY	PART NO.	DESCRIPTION
1	1	2968-213	CLOSE WHEEL MOUNT PLATE
2	1	2502-362	1/2-13 X 5 HHCS GR. 5 ZP
3	4	2526-352	1/2 SAE FLAT WASHER ZP
4	1	2520-357	1/2-13 LOCK HEX NUT ZP
5	4	2526-253	3/8 SAE FLAT WASHER ZP
6	1	2502-232	3/8-16 X 1-1/2 HHCS GR 5 ZYD

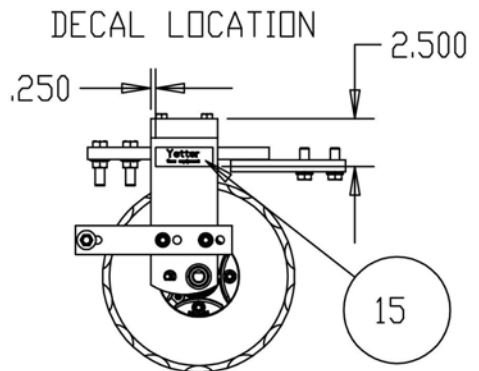
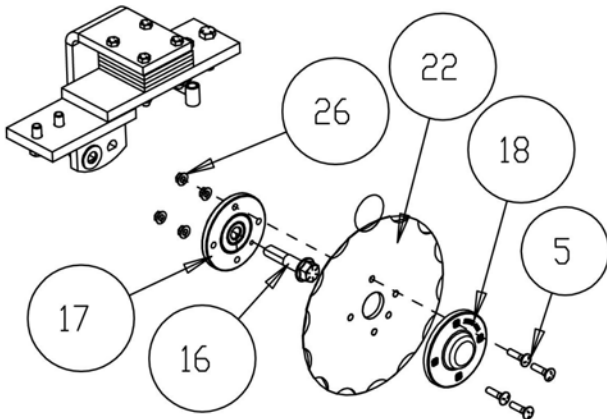
L669-3000 KINZE

PARTS IDENTIFICATION

2968-025
ROW UNIT MT WHITE 9000



2968-132
WHEEL ASS'Y



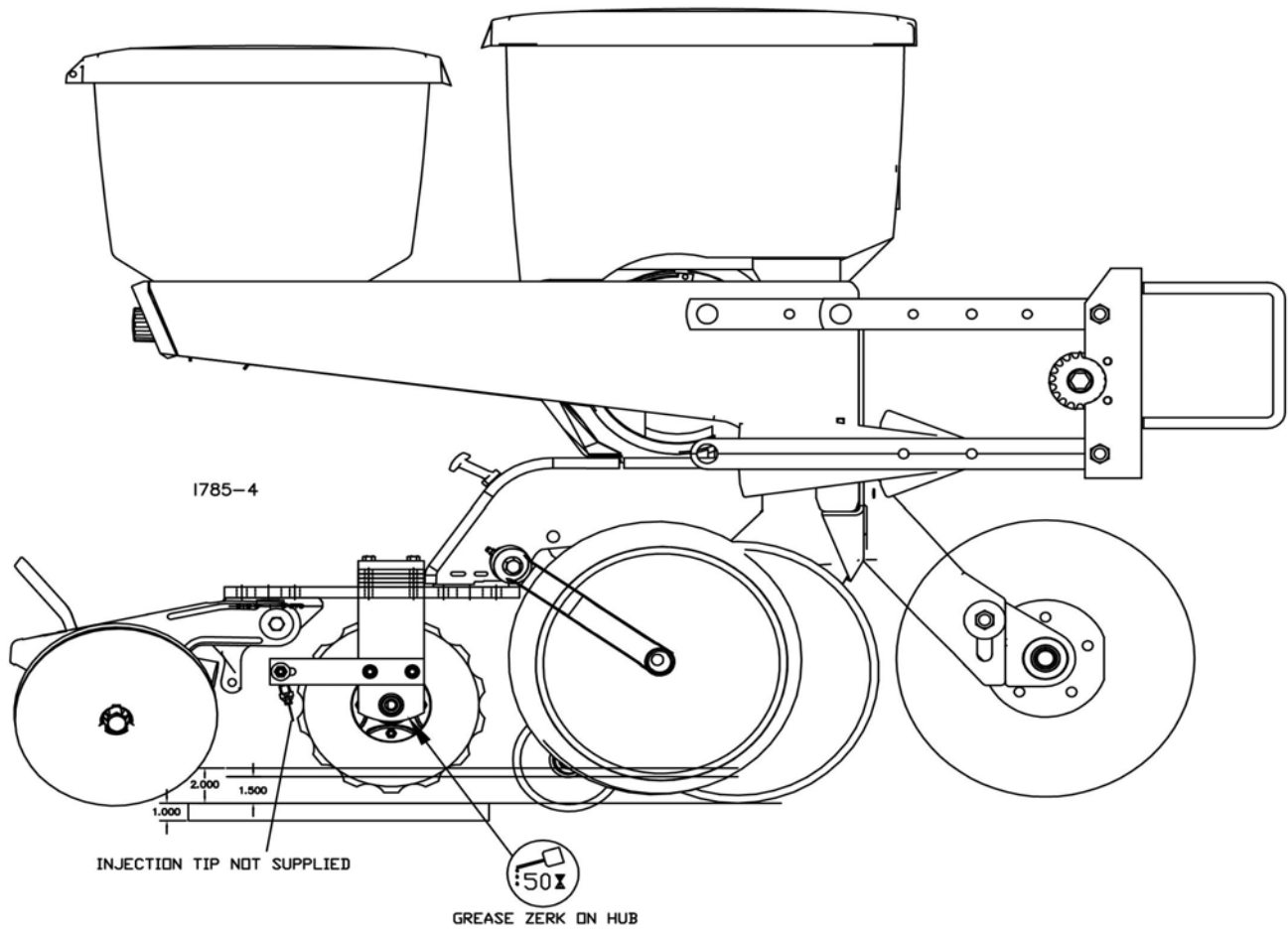
ISO-2968-025

PARTS IDENTIFICATION

2968-025

ITEM	PART #	DESCRIPTION	QTY
1	2502-232	3/8-16 X 1 1/2 HHCS GR 5 ZYD	2
2	2502-241	3/8-16 X 2 3/4 HHCS GR5 ZP	4
3	2502-351	1/2-13 X 2 HHCS GR.5 ZP	2
4	2502-379	M12 X 1.75 X 35 GRD 10.9 ZYD	2
5	2505-207	5/16-18 X 1 1/4 CARBLT G5 ZP	4
6	2520-253	3/8-16 JAM HEX NUT ZP	2
7	2520-258	3/8-16 HEX FLANGE LCK NUT ZP	6
8	2520-361	1/2-13 FLANGE WHZLCK HXNT ZP	2
9	2520-452	5/8-11 HEXNUT ZP	1
10	2525-251	3/8 MED. LOCKWASHER ZP.	1
11	2525-352	1/2 MED LOCKWASHER ZP.	2
12	2525-451	5/8 MED. LOCKWASHER ZP.	1
13	2526-251	3/8 STANDARD FLATWASHER ZP	2
14	2526-454	5/8 SAE FLATWASHER HRD'ND YD	2
15	2565-179	YETTER DECAL 1" X 3"	1
16	2570-740	D-BOLT, FLGD, 5/8-11 X 2.812 GR. 8	1
17	2965-128	HUB & BEARING ASS'Y., 4 BOLT	1
18	2965-352	HUB CAP CASTING, 4 BOLT, BLACK	1
19	2968-132	FERTILIZER WHEEL ASS'Y	1
20	2968-218	INJECTOR HOLDER W.A.	1
21	2968-221	RELOCATION PLATE, W.A., WHITE	1
22	2968-320	10.05 X .256 FERTILIZER WHEEL	1
23	2968-326	1/4" SHIM PLATE	4
24	2968-351	INJECTOR BRACKET	1
25	2968-354	FERT. WHEEL MOUNT 2015	1
26	N10213	5/16-18 SERRATED FLNG NTZP	4

OPERATION



IMPORTANT: For proper operation, the planter frame must operate level (for, aft and side to side) and at the correct height, typically 20"-22".

MAINTENANCE

Regularly inspect the residue manager for loose or worn parts. Repair and replace as needed.

BEARING ASSEMBLY AND LUBRICATION

Practice Safety

Understand and practice safe service procedures before doing work. Follow ALL the operating, maintenance and safety information in the equipment operator manual. Clear the area of bystanders, especially small children, when performing any maintenance or adjustments. Keep work area clean and dry. Use adequate lighting for the job. Use only tools, jacks and hoists of sufficient capacity for the job.

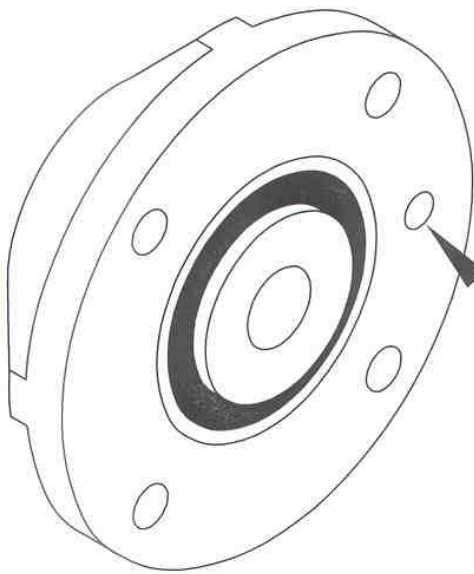
Never lubricate, service, or adjust machine while it is moving. Keep hands, feet, and clothing from power-driven moving and rotating parts. Disengage all power and operate controls to relieve pressure. Lower equipment to the ground and stop the engine. Remove the key. Wait for all moving parts to stop before servicing, adjusting, repairing or unplugging.

Securely support any machine elements with blocks or safety stands that must be raised for service work.

Keep all parts in good condition and properly installed. Fix damaged equipment immediately. Replace worn or broken parts. Remove any buildup of grease, oil, or debris.

Make sure all guards are in place and properly secured when maintenance work is completed.

Assembly

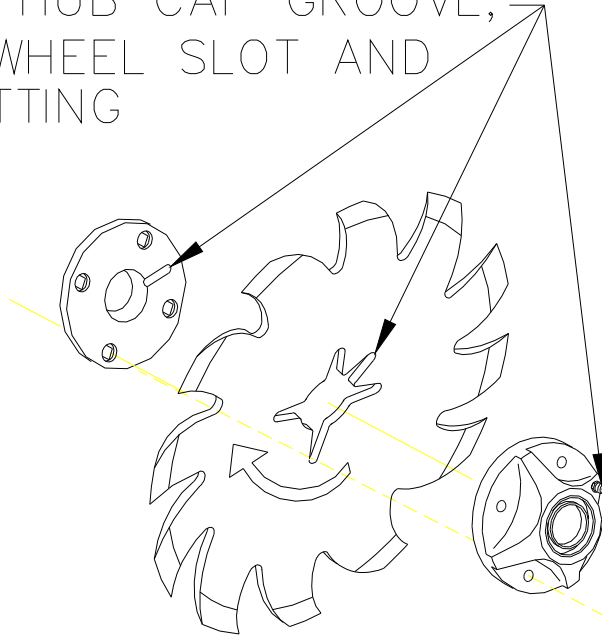


ALIGN GREASE
FITTING HOLES.

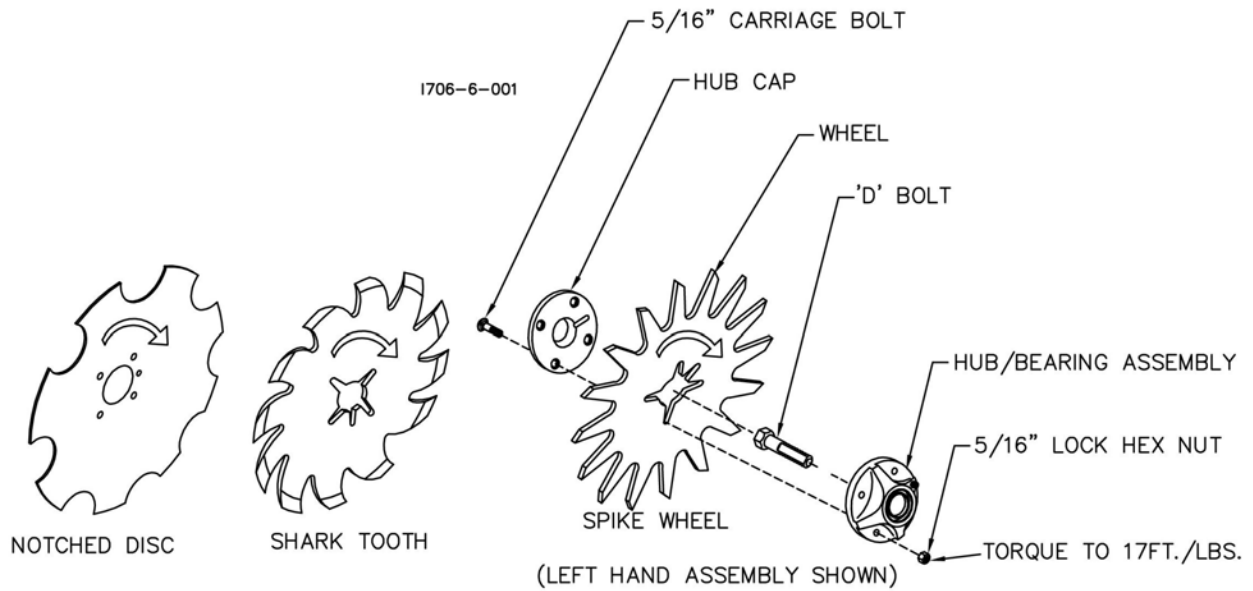
I190-1

MAINTENANCE

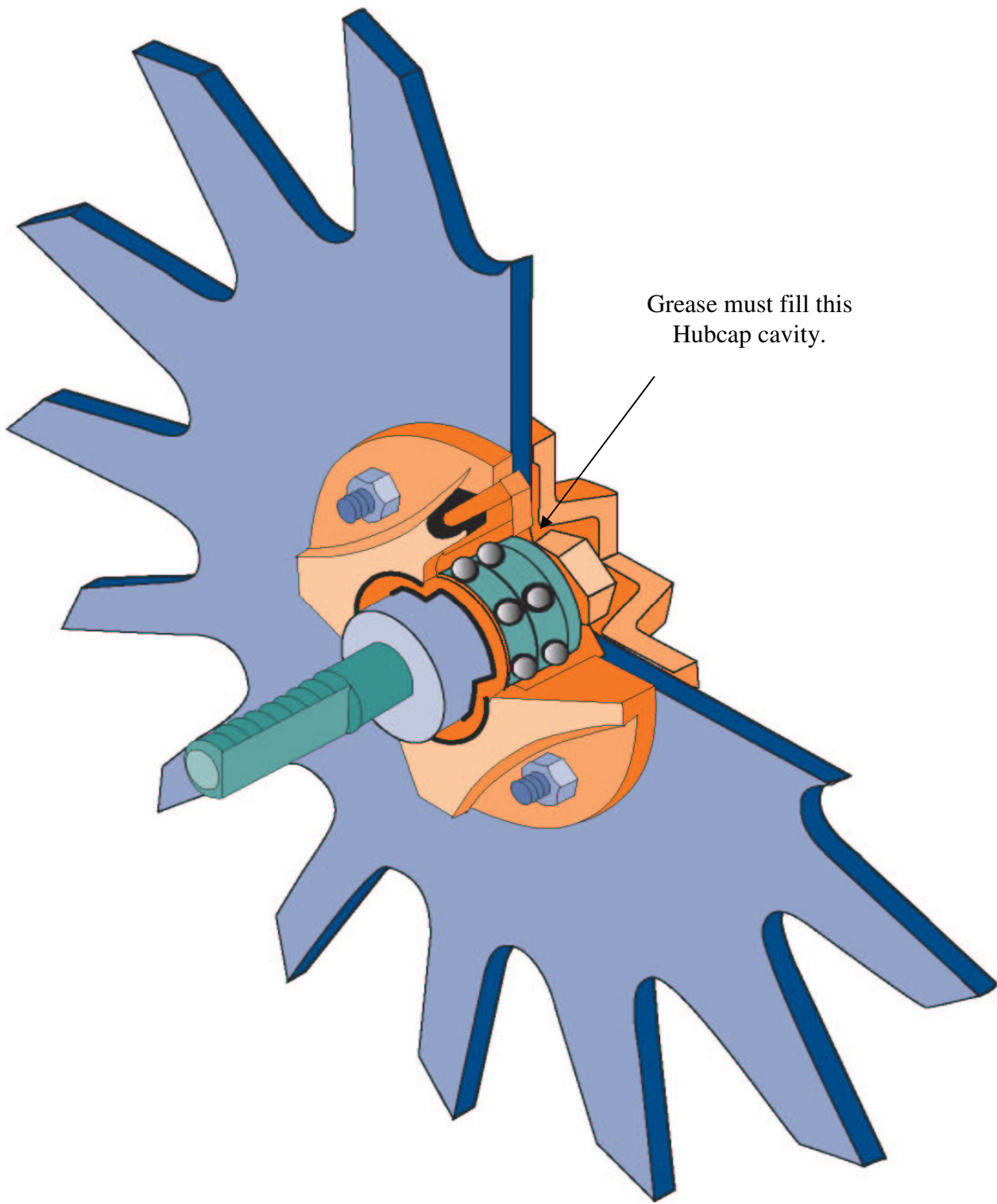
ALIGN THE HUB CAP GROOVE,
WITH THE WHEEL SLOT AND
GREASE FITTING



NOTE: Be certain to align the grease fitting with the slot in the wheel and the hubcap so that the grease can flow freely.




MAINTENANCE



MAINTENANCE

Lubrication

 **CAUTION:** To help prevent serious injury or death to you or others caused by unexpected movement, service machine on a level surface. Lower machine to ground or sufficiently lock or block raised machine before servicing. If machine is connected to tractor, engage parking brake and place transmission in "PARK", shut off engine and remove key. If machine is detached from tractor, block wheels and use shop stands to prevent movement.

 **CAUTION:** Do not clean, lubricate, or adjust machine while in motion.

Use grease based on NLGI consistency numbers and the expected air temperature range during the service interval.

Use a **multi-purpose lithium, water resistant, moderate speed, and NLGI grade #2** grease. Other greases may be used if they meet the following **NLGI Performance Classification: GC-LB**

IMPORTANT: Some types of grease thickener are not compatible with others. Consult your grease supplier before mixing different types of grease.

Alternative Lubricants

Conditions in certain geographical areas may require special lubricants and lubrication practices which do not appear in the operator's manual. If there are any questions, consult Yetter Manufacturing Co. to obtain latest information and recommendation.

PART #	DESCRIPTION	OUNCES OF GREASE
2967-404	13" TAPER TOOTH R.M. WHEEL	1.12 OZ
2967-602	13" SHARK TOOTH R.M. WHEEL	1.12 OZ
2967-186	FLOATER WHEEL KIT W/R.M. WHEEL	2.08 OZ
2967-596	HEAVY DUTY OR BEVEL R.M. WHEEL W/ FLOATER WHEEL KIT	2.40 OZ

Storing Lubricants

Your machine can operate at top efficiency only if clean lubricants are used.

Use clean containers to handle all lubricants.

Store them in an area protected from dust, moisture and other contaminants.

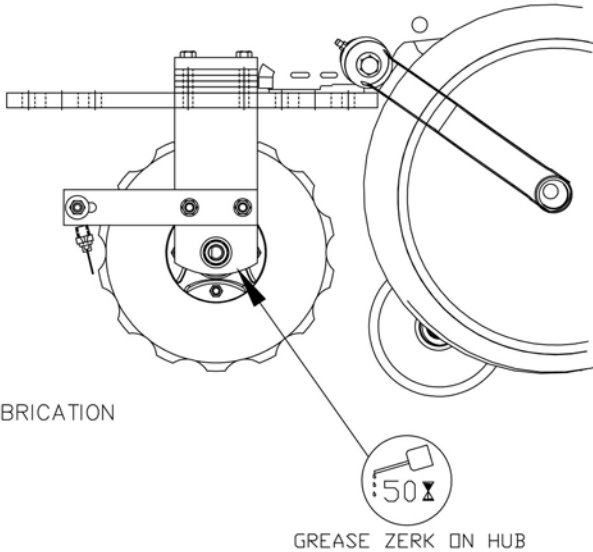
MAINTENANCE

Lubrication Symbols



Lubricate with grease at hourly interval indicated on symbol.

Lubrication Intervals



IMPORTANT: The recommended service intervals are based on normal conditions; severe or unusual conditions may require more frequent lubrication.

Perform each lubrication and service procedure at the beginning and end of each season. Clean grease fittings before using grease gun, to avoid injecting dirt and grit into the bearing. Replace any lost or broken fittings immediately. If a fitting fails to take grease, remove and clean thoroughly, replace fitting if necessary. Also check for failure of adjoining parts.

BEARING REPLACEMENT INSTALLATION

1. When assembling the spoke wheels, bearing assembly and hubcap, be sure to align the grease transfer hole in the spoke wheel with the groove in the hubcap and hole in the hub to allow grease passage.
2. Assemble the wheels, hubs and caps.
3. Grease the wheel/hub/bearing assembly.

MAINTENANCE

Storing the Equipment

Store the machine in an area away from human activity

Store machine in RAISED position.

Install service locks on all wheel cylinders.

At the end of the season, the machine should be thoroughly inspected and prepared for storage.

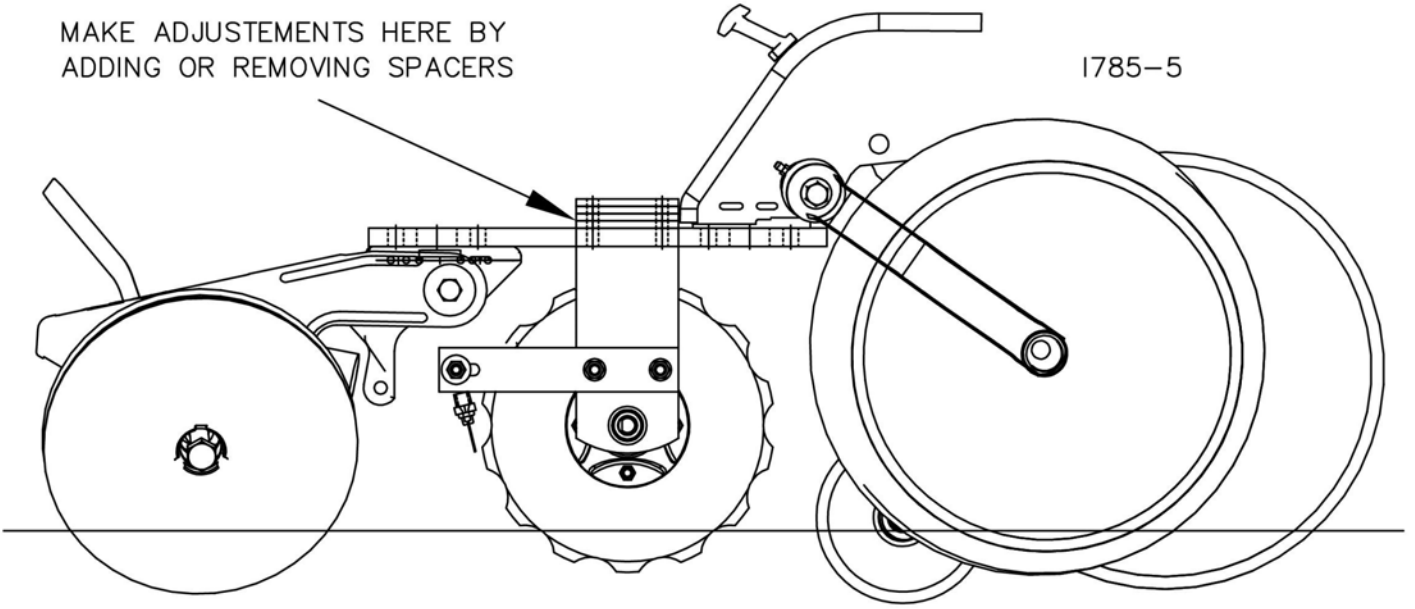
Repair or replace any worn or damaged components to prevent down time at the start of the next season. Store machine under cover with all parts in operating condition.

- Clean machine thoroughly to remove all dirt, debris and crop residue, which would hold moisture and cause rusting.
- Inspect machine for worn or broken parts. See your Yetter Farm Equipment dealer during the off-season so that parts or service can be acquired when machine is not needed in the field.
- Lubricate bearings as outlined in the Lubrication section
- Paint all parts which are chipped or worn and require repainting.
- Store machine in a clean, dry place with the planting unit out of the sun.
- If the machine cannot be stored inside, cover with a waterproof tarpaulin and tie securely in place.
- Do not allow children to play on or around the machine

ADJUSTMENTS

MAKE ADJUSTMENTS HERE BY
ADDING OR REMOVING SPACERS

1785-5



LIQUID FERTILIZER APPLICATION RATE AND PRESSURE CHART

TABLES ARE BASED ON 30" NOZZLE SPACING

TIP #	LIQUID PRESSURE IN PSI	CAPACITY 1 NOZZLE IN GPM	GALLONS PER ACRE (USING WATER)					
			4 MPH H2O	5 MPH H2O	5.5 MPH H2O	6 MPH H2O	7 MPH H2O	8 MPH H2O
#00015	20	0.11	5.45	4.36	3.96	3.63	3.11	2.72
	25	0.12	5.94	4.75	4.32	3.96	3.39	2.97
	30	0.13	6.44	5.15	4.68	4.29	3.68	3.22
	40	0.15	7.43	5.94	5.40	4.95	4.24	3.71
	50	0.17	8.42	6.73	6.12	5.61	4.81	4.21
	60	0.18	8.91	7.13	6.48	5.94	5.09	4.46
#0002	20	0.14	6.93	5.54	5.04	4.62	3.96	3.47
	25	0.16	7.92	6.34	5.76	5.28	4.53	3.96
	30	0.17	8.42	6.73	6.12	5.61	4.81	4.21
	40	0.20	9.90	7.92	7.20	6.60	5.66	4.95
	50	0.23	11.39	9.11	8.28	7.59	6.51	5.69
	60	0.25	12.38	9.90	9.00	8.25	7.07	6.19
#0003	20	0.21	10.40	8.32	7.56	6.93	5.94	5.20
	25	0.24	11.88	9.50	8.64	7.92	6.79	5.94
	30	0.26	12.87	10.30	9.36	8.58	7.35	6.44
	40	0.30	14.85	11.88	10.80	9.90	8.49	7.43
	50	0.34	16.83	13.46	12.24	11.22	9.62	8.42
	60	0.37	18.32	14.65	13.32	12.21	10.47	9.16
#0004	20	0.28	13.86	11.09	10.08	9.24	7.92	6.93
	25	0.32	15.84	12.67	11.52	10.56	9.05	7.92
	30	0.35	17.33	13.86	12.60	11.55	9.90	8.66
	40	0.40	19.80	15.84	14.40	13.20	11.31	9.90
	50	0.45	22.28	17.82	16.20	14.85	12.73	11.14
	60	0.49	24.26	19.40	17.64	16.17	13.86	12.13
#0005	20	0.35	17.33	13.86	12.60	11.55	9.90	8.66
	25	0.40	19.80	15.84	14.40	13.20	11.31	9.90
	30	0.43	21.29	17.03	15.48	14.19	12.16	10.64
	40	0.50	24.75	19.80	18.00	16.50	14.14	12.38
	50	0.56	27.72	22.18	20.16	18.48	15.84	13.86
	60	0.61	30.20	24.16	21.96	20.13	17.25	15.10
#0006	20	0.42	20.79	16.63	15.12	13.86	11.88	10.40
	25	0.47	23.27	18.61	16.92	15.51	13.29	11.63
	30	0.52	25.74	20.59	18.72	17.16	14.71	12.87
	40	0.60	29.70	23.76	21.60	19.80	16.97	14.85
	50	0.67	33.17	26.53	24.12	22.11	18.95	16.58
	60	0.74	36.63	29.30	26.64	24.42	20.93	18.32
#0008	20	0.57	28.22	22.57	20.52	18.81	16.12	14.11
	25	0.63	31.19	24.95	22.68	20.79	17.82	15.59
	30	0.69	34.16	27.32	24.84	22.77	19.52	17.08
	40	0.80	39.60	31.68	28.80	26.40	22.63	19.80
	50	0.89	44.06	35.24	32.04	29.37	25.17	22.03
	60	0.98	48.51	38.81	35.28	32.34	27.72	24.26
#0010	20	0.71	35.15	28.12	25.56	23.43	20.08	17.57
	25	0.79	39.11	31.28	28.44	26.07	22.35	19.55
	30	0.87	43.07	34.45	31.32	28.71	24.61	21.53
	40	1.00	49.50	39.60	36.00	33.00	28.29	24.75
	50	1.12	55.44	44.35	40.32	36.96	31.68	27.72
	60	1.23	60.89	48.71	44.28	40.59	34.79	30.44
#0015	20	1.06	52.47	41.98	38.16	34.98	29.98	26.24
	25	1.19	58.91	47.12	42.84	39.27	33.66	29.45
	30	1.30	64.35	51.48	46.80	42.90	36.77	32.18
	40	1.50	74.25	59.40	54.00	49.50	42.43	37.13
	50	1.68	83.16	66.53	60.48	55.44	47.52	41.58
	60	1.81	89.60	71.68	65.16	59.73	51.20	44.80
ROW SPACING MULTIPLIER	10" X 3.3	15" X 2.0	18" X 1.66	20" X 1.5	36" X .83	38" X .79	40" X .75	

Values in this chart area based on using water. To calculate nozzle size required for your fertilizer application, the weight of the fertilizer solution must be accounted for by using a conversion factor for specific gravity. The Conversion factor for 28% liquid nitrogen is 1.13. Example: desired rate of application is 10 GPA of 28% N multiply 10 gallons per acre of fertilizer you want to apply x the conversion factor for 28% N (1.13) to get an equivalent rate for water. 10 x 1.13 refers to the chart for 11.13 gallons per acre at your desired speed/MPH.

$$\text{GPA (Per Nozzle)} = \frac{5940 \times \text{GPM}}{\text{MPH} \times \text{W}}$$

H2O = WATER
 GPA = GALLON PER ACRE
 GPM = GALLON PER MINUTES
 MPH = MILES PER HOUR
 W = WIDTH

SOLUTION
 28% = H2O/1.13
 32% = H2O/1.15

This table is a reference only. Please calibrate your equipment to insure proper rate of application.

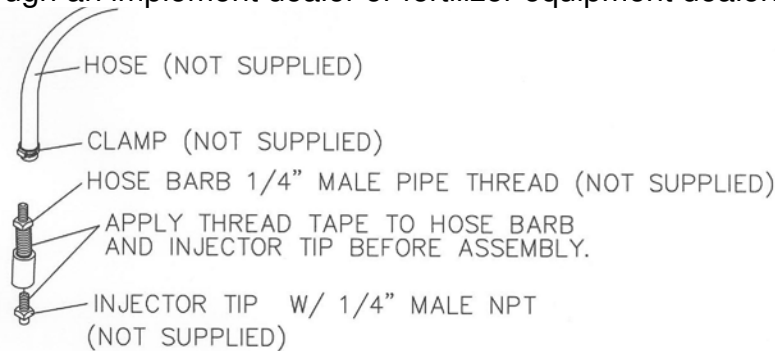
The information contained in this issue is offered in good faith by Yetter Mfg. Co. to further the understanding of liquid fertilizer application.

However, the use of the information provided is beyond the control of Yetter Mfg. Co. and in no case shall Yetter Mfg. Co. or any seller of its products be responsible for any damages that may occur from the use of this information.

2968-030 CNH INJECTOR KIT ASSEMBLY INSTRUCTIONS

Remove both covering discs from the CNH planter unit. The leading disc is replaced with 2968-130 disc assembly, attach the disc using the 5/8"x2" bolt, 2967-468 spacer bushing and lock nut. The trailing disc will re-use the Case concave disc, attach the concave disc using the 5/8"x4" bolt, 6000-336 spacer bushings and the 2968-353 injector mount. There are two additional spacer bushings that can be used to increase the distance the fertilizer is placed from the row.

Assemble the hose barb and injector tip (not supplied) to the 2968-218 injector holder. Injector tips can be ordered through an implement dealer or fertilizer equipment dealer.



1785—HOSE BARB ASSEMBLY

Thread a 3/8" nut onto 2968-218 injector holder and insert the stud through hole in the injector mount. Install another 3/8" nut onto stud and adjust the nozzle to be directly behind the blade. Tighten nuts securely.

Plumb your fertilizer lines to the hose barb. Calibrate the fertilizer pump and tips to maximum recommended pressure of 30 p.s.i. and minimum 20 p.s.i. **Check that hoses do not become pinched as the planter unit and close wheel bracket moves up and down.**

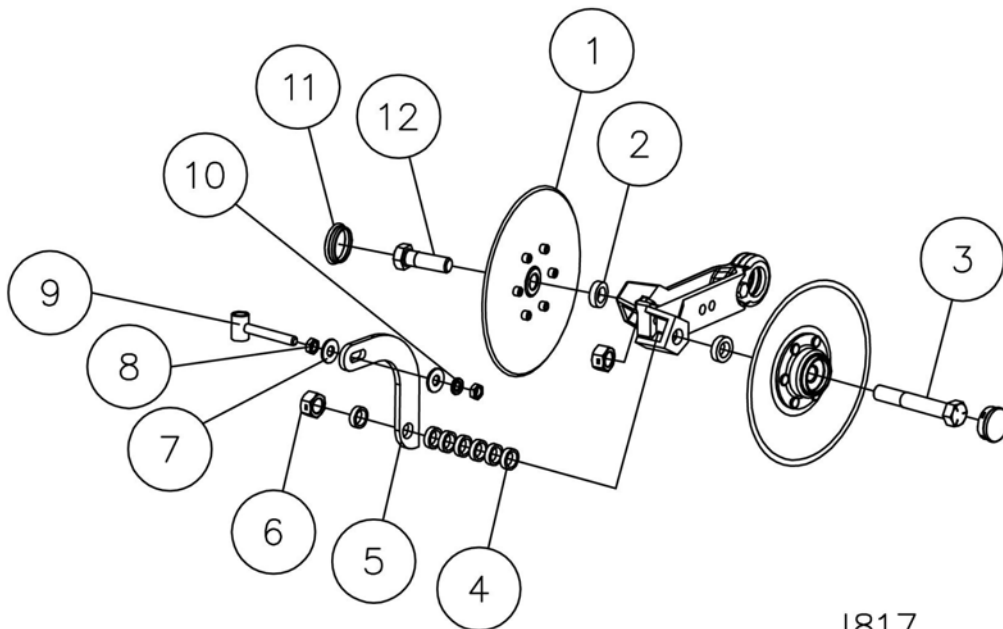
IMPORTANT: It is best to consult the fertilizer supplier for optimum placement when placing starter fertilizer in close proximity to the seed.

NOTE: If there is a buildup of damp soil the planter gauge wheels or opener disks, then conditions are less than "ideal" and some problems may also be encountered with Fertilizer Injection Disc. In some situations it may be advisable to remove the Fertilizer Injection Disc from the planter unit, if the problem continues.

PARTS IDENTIFICATION

2968-030 FERTILIZER INJECTOR KIT

DET	QTY	PART NO.	DESCRIPTION
1	1	2968-130	HUB & WHEEL ASSEMBLY
2	2	2967-468	9/32" PIVOT ARM BUSHING ZYD
3	1	2502-336	5/8-11 X 4 HHCS GR. 5 ZP
4	7	6000-336	BUSHING PIVOT
5	1	2968-353	INJECTOR STRAP
6	2	2520-459	5/8-11 LOCK HEX NUT ZP
7	2	2526-251	3/8 STANDARD FLATWASHER ZP
8	2	2520-253	3/8-16 JAM HEX NUT ZP
9	1	2968-218	INJECTOR HOLDER W.A.
10	1	2525-251	3/8 MED LOCKWASHER
11	1	2570-542	DUST CAP, STEEL
12	1	2502-391	5/8-11 X 2 HHCS GR. 5 ZP



1817

Our name Is getting known

Just a few years ago, Yetter products were sold primarily to the Midwest only. Then we embarked on a program of expansion and moved into the East, the South, the West and now north into Canada. We're even getting orders from as far away as Australia and Africa.

So, when you buy Yetter products . . .you're buying a name that's recognized. A name that's known and respected. A name that's become a part of American agriculture and has become synonymous with quality and satisfaction in the field of conservation tillage.

Thank you.

YETTER MANUFACTURING CO.
Colchester, IL 62326-0358 • 309/776-4111
Toll Free 800/447-5777
Fax 309/776-3222
Website: WWW.YETTERCO.COM
E-MAIL: INFO@YETTERCO.COM