



2965 TRASHMASTER 2967 RESIDUE MANAGER

SET-UP & PARTS MANUAL

2565-631_REV_G • 11/2016



YETTER MANUFACTURING CO.
FOUNDED 1930

Colchester, IL 62326-0358
Toll free: 800/447-5777
309/776-3222 (Fax)

Website: www.yetterco.com
E-mail: info@yetterco.com

YETTER


FOREWORD

You've just joined an exclusive but rapidly growing club.

For our part, we want to welcome you to the group and thank you for buying a Yetter product.

We hope your new Yetter products will help you achieve both goals-increase your productivity and increase your efficiency so that you may generate more profit.

This operator's manual has been designed into four major sections: Foreword, Safety Precautions, Installation Instructions and Parts Breakdown.

 This **SAFETY ALERT SYMBOL** indicates important safety messages in the manual. When you see this symbol, be alert to the possibility of **PERSONAL INJURY** and carefully read the message that follows.

The word **NOTE** is used to convey information that is out of context with the manual text. It contains special information such as specifications, techniques and reference information of a supplementary nature.

The word **IMPORTANT** is used in the text when immediate damage will occur to the machine due to improper technique or operation. Important will

apply to the same information as specified by note only of an immediate and urgent nature.

It is the responsibility of the user to read the operator's manual and comply with the safe and correct operating procedure and to lubricate and maintain the product according to the maintenance schedule in the operator's manual.

The user is responsible for inspecting his machine and for having parts repaired or replaced when continued use of the product would cause damage or excessive wear to the other parts.

It is the user's responsibility to deliver his machine to the Yetter dealer who sold him the product for service or replacement of defective parts, which are covered by the warranty policy.

If you are unable to understand or follow the instructions provided in this publication, consult your local Yetter dealer or contact:

YETTER MANUFACTURING CO.

309/776-4111

800/447-5777

309/776-3222 (FAX)

Website: www.yetterco.com

E-mail: info@yetterco.com

WARRANTY

Yetter Manufacturing warrants all products manufactured and sold by it against defects in material. This warranty being expressly limited to replacement at the factory of such parts or products as shall appear to be defective after inspection. This warranty does not obligate the Company to bear cost of labor in replacement of parts. It is the policy of the Company to make improvements without incurring obligations to add them to any unit already sold. No warranty is made or authorized to be made, other than herein set forth. This warranty is in effect for one year after purchase.

Dealer _____

Yetter Manufacturing warrants its own products only and cannot be responsible for damages to equipment on which mounted.

TABLE OF CONTENTS

FOREWORD.....	2
WARRANTY.....	2
TABLE OF CONTENTS.....	3
SAFETY.....	4
OPERATIONS PRECAUTIONS.....	5
PLANTER ADJUSTMENT.....	6
BOLT TORQUE.....	7
YETTER MODEL 2965 & 2967.....	8
INSTALLATION.....	8-9
ASSEMBLY.....	10
OPERATING ADJUSTMENTS.....	11
MAINTENANCE.....	12-17
PARTS IDENTIFICATION.....	18-27

SAFETY

A brief description of signal words that may be used in this manual:

CAUTION: Used as a general reminder of good safety practices or to direct attention to unsafe practices.

WARNING: Denotes a specific potential hazard.

DANGER: Denotes the most serious specific potential hazard.

SAFETY PRECAUTIONS

You can make your farm a safer place to live and work if you observe the safety precautions given. Study these precautions carefully and insist that those working with you and for you follow them.

Finally, remember this: someone's carelessness, neglect or oversight usually causes an accident.



WARNING

Never clean, lubricate or adjust a machine that is in motion. Always lower or block the implement before performing service.

If machine must be serviced in the raised position, jack or block it up to prevent it from accidentally falling or injuring someone.

Do not allow riders on the tractor or implement.

Use speeds and caution dictated by the terrain being traversed. Do not operate on any slope steep enough to cause tipping or loss of control.

Be sure all personnel are clear of the immediate area before operating.

Read and understand the operator's manual and require all other persons who will operate the equipment to do the same.

Be familiar with all tractor and implement controls and be prepared to stop engine and implements quickly in an emergency.



CAUTION

Consult your implement and tractor operator's manual for correct and safe operating practices.

Beware of towed implement width and allow safe clearance.

FAILURE TO HEED MAY RESULT IN PERSONAL INJURY OR DEATH.

OPERATION PRECAUTIONS

STOP

Read this before using the Yetter product.

- MACHINE OPERATION

IMPORTANT: failure to properly set the planter frame height and levelness can result in less than successful operation of the planter and the Yetter product and may result in damaged equipment. All operators should read and thoroughly understand the instructions given prior to using the Yetter product.

NOTE: **DO NOT** use this product if the planter is not adjusted properly!

Leveling the planter:

With the planter lowered to proper operating height (**Usually 20"-22"**).

Read the planter operator's manual for recommended setting. Check to be sure the toolbar and row unit parallel arms are level fore and aft. **Re-check** when the planter is in the **field** and has been **fully loaded** with seed, fertilizer, granular chemicals, etc. Also, a field check with a bubble level on the frame should be made of the hitch height to ensure level operation front to back.

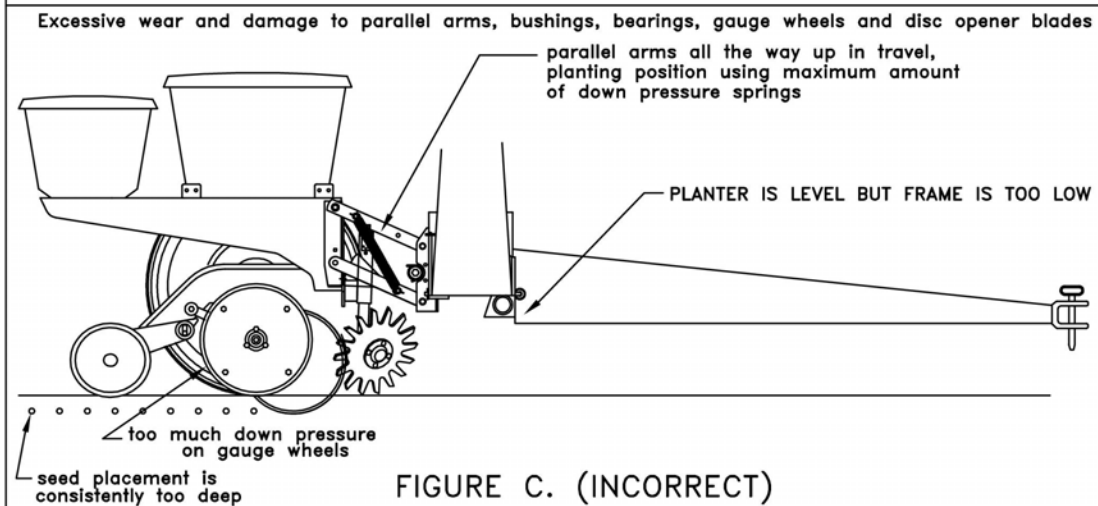
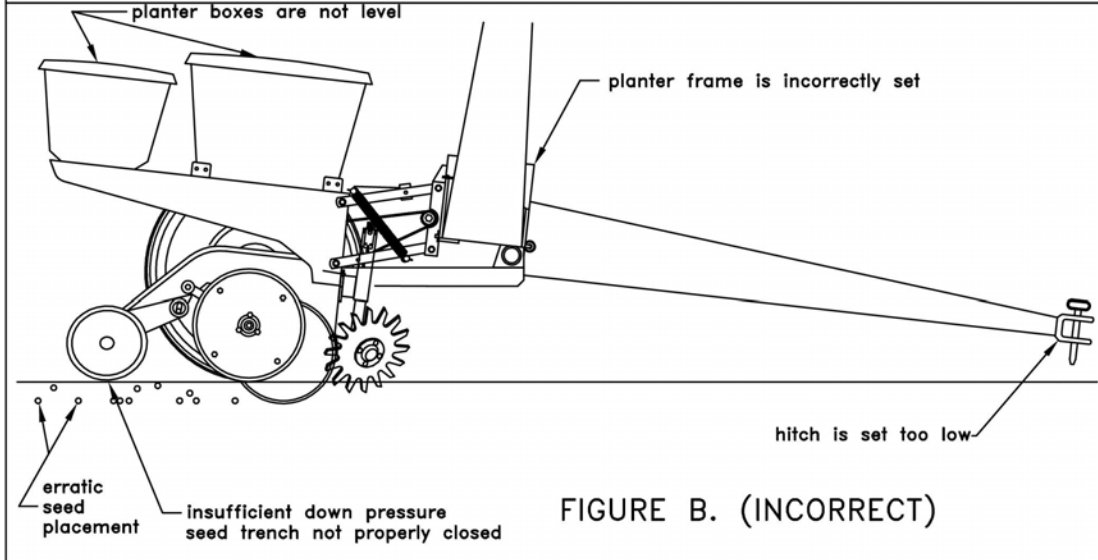
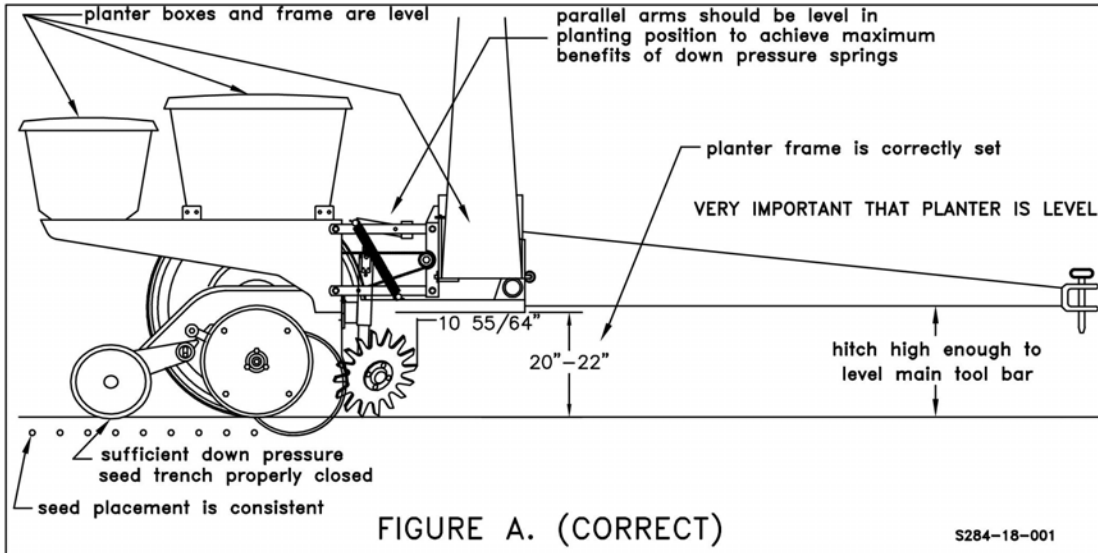
It is important for the planter to operate level laterally. Tire pressure must be maintained at pressures specified by the manufacturer.

Field and actual planting conditions change and will dictate planter frame heights. You must ensure that the row unit parallel arms are approximately parallel with the ground.

IMPORTANT: For proper operation of the planter attachments and row units, it is imperative that the planter toolbars and row unit parallel arms be level side-to-side and front-to-rear. The toolbar frame should operate at a 20"-22" height from the **planting surface**. Check the manufacturer's operator's manual for instructions on how to adjust the frame height and levelness.

PLANTER ADJUSTMENT

2967-052



BOLT TORQUE

Mounting bolts and hardware

Before operating the Residue Manager for the first time, check to be sure that all hardware is tight. Check all hardware again after approximately 50 hours of operation and at the beginning of each planting season.

All hardware used on the Residue Manager is Grade 5 unless otherwise noted. Grade 5 cap screws are marked with three radial lines on the head. If hardware must be replaced, be sure to replace it with hardware of equal size, strength and thread type. Refer to the torque values chart when tightening hardware.







Important: Over tightening hardware can cause as much damage as when under tightening. Tightening hardware beyond the recommended range can reduce its shock load capacity.

The chart below is a guide for proper torque. Use it unless a specified torque is called out elsewhere in the manual.

Torque is the force you apply to the wrench handle or the cheater bar, times the length of the handle or bar.

Use a torque wrench whenever possible.

The following table shows torque in ft. lbs. for coarse thread hardware.

BOLT DIA. AND THREADS PER INCH	 GRADE 2	 OR  GRADE 5 A-325	 GRADE 8
1/4	6	10	14
5/16	12	20	30
3/8 - 16	25	35	50
7/16 - 14	35	55	80
1/2 - 13	55	85	125
9/16 - 12	75	125	175
5/8 - 11	105	170	235
3/4 - 10	185	305	425
7/8 - 9	170	445	690
1-8	260	670	1030
1 1/8 - 7	365	900	1460
1 1/4 - 7	515	1275	2060
1 3/8 - 6	675	1675	2700
1 1/2 - 6	900	2150	3500
1 3/4 - 5	1410	3500	5600



Lubricate all bearings and moving parts as assembled and make certain that they work freely.

WARNING: Never work around the toolbar/implement while in a raised position without using safety lockups.



CAUTION: The Residue Managers are very heavy and sharp. Pay extra attention to lifting techniques while handling and or maneuvering the opener during assembly. Failure to do so may lead to personal injury.

YETTER MODEL 2965 & 2967

2965 Trashmaster and 2967 Residue Manager

The **2965 Trashmaster** is a smooth disc furrowing attachment for planters which will cut a layer of dirt and residue in front of the planter unit to leave a clear fresh path for the planter opener discs. The 2965 Trashmaster is designed to *move* dirt and residue out of the path of the planter opener.

The **2967 Residue Manager** is designed to work in heavy residue situations especially where minimum soil movement is required. Depending on conditions and objectives, the 2967 Residue Manager can be set shallow with the teeth only engaged in the residue so as to clear heavy residue with minimal soil disturbance. Residue Managers are not recommended when surface application pre-plant herbicide is used prior to planting.

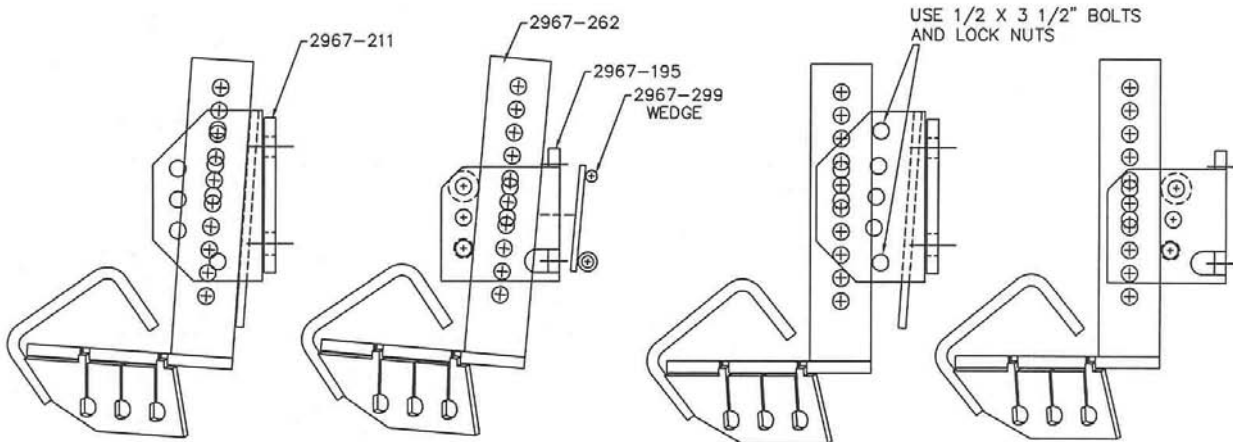
OPTIONAL EQUIPMENT FOR TRASHMASTER & RESIDUE MANAGER

Model No.	Description
6000-160	Light duty spring used only w/model 2965-015 and 2967-015.
2960-126	Heavy-duty down pressure spring package used on the 2965-015 and 2967-015.
2967-455	Residue Manager Wheel Cleaner
2967-081	Residue Manager for John Deere Screw Adjust Bracket

INSTALLATION

The universal model that fits on JD 7200/1700 series planters can be mounted two ways (See Figure 1). The front set of holes is to mount these models on planter units with light duty or heavy duty cast lower parallel arms. If the front set of holes is used, assemble two 1/2 bolts, 1/2" x 3-1/2", to the upper and lower rear holes on the mounting bracket using 1/2" locknuts. **NOTE:** Do not over-tighten. The rear set of holes is for planter units with heavy-duty welded lower parallel arms. For this application the 1/2" x 3-1/2" bolts are not used.

MOUNTING ARRANGEMENTS FOR JOHN DEERE 7200/1700 SERIES



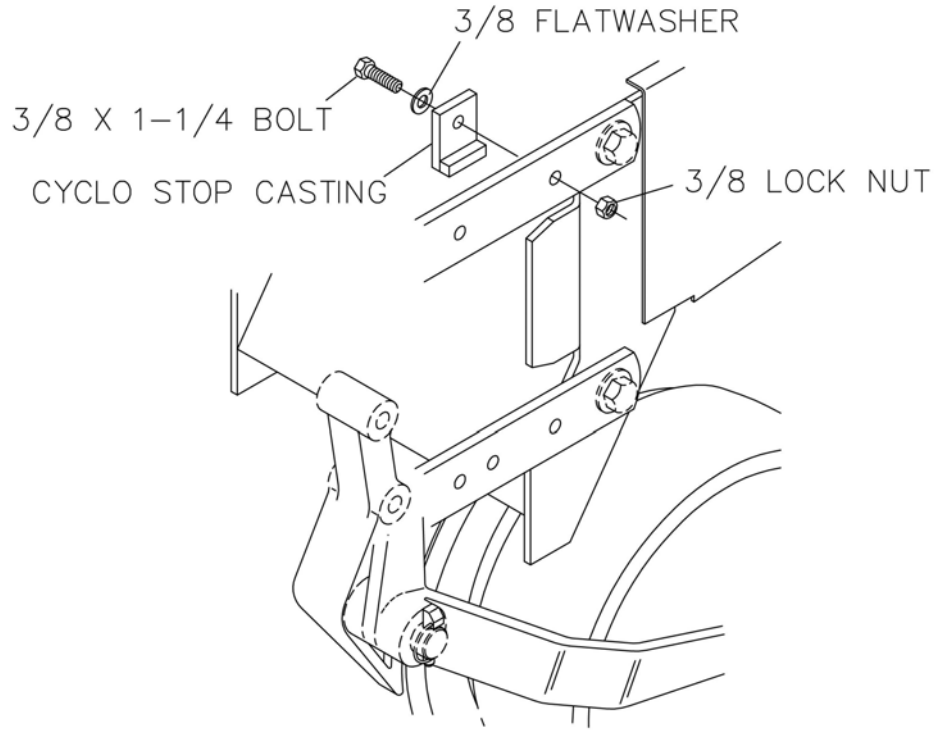
S60-1

**FOR HEAVY DUTY "WELDED"
LOWER PARALLEL ARMS &
21" LONG PARALLEL ARMS
JD7000, KINZE 2000 (PRE 1993)**

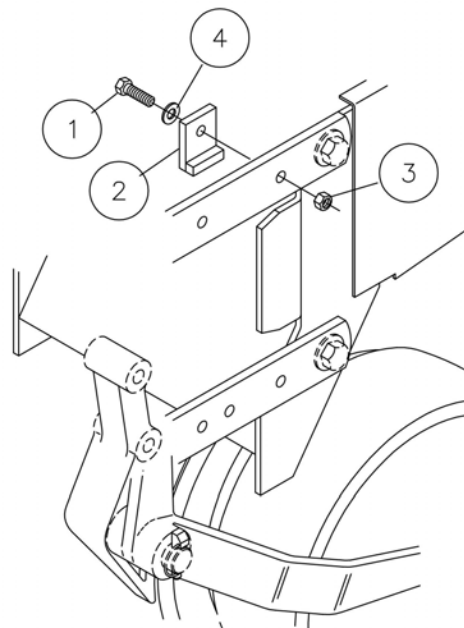
**FOR LIGHT DUTY OR HEAVY DUTY CAST
14" LOWER PARALLEL ARMS
ALSO: KINZE 2000 (1993-NEWER), 3000 &
WHITE 6100, 8000, 9000**

FIGURE 1

INSTALLATION INSTRUCTIONS



I727-4A



I727-4B

DET	QTY	PART NO.	DESCRIPTION
1	2	2502-244	3/8-16 X 1-1/4 HHCS GR 5
2	2	2960-223	CYCLO STOP
3	2	2520-255	3/8-16 HEX LOCK NUT
4	2	2526-253	3/8 SAE FLATWASHER

ASSEMBLY

2965 Trashmaster

1. When assembling the blade, bearing assembly and hub cap, be sure to align the grease fitting hole with the hole in the blade, with groove in hub cap to assure proper greasing of blade assembly.
2. Install Trashmaster as shown in parts identification view of the appropriate model. Always stagger the blades so that half of the rows have the left blade leading and half have the right blade leading.
3. Fill hub and bearing assembly with general-purpose grease.

2967 Residue Manager

1. Build half of the row cleaner wheel assemblies as left-hand wheel assemblies and half as right-hand wheel assemblies. This is determined by which side of the wheel support and in which hole the wheel assembly is installed.
2. When assembling the spoke wheel, bearing assembly and hub cap, be sure to align the grease fitting hole with the hole in the spoke wheel with groove in hub cap to assure proper greasing of wheel and hub assembly.
3. Install Residue Manager as shown in parts identification view of the appropriate model. Be sure to install the 3/4" spacers and bearing shields when assembling the spoke wheel and bearing assembly. Stagger spoke wheel so that half of the rows have the left wheel leading and half of the rows have the right wheel leading.
4. Fill the hub and bearing assembly with general-purpose grease.

OPERATING ADJUSTMENTS

Be sure planter frame is **LEVEL** and at the height stated in the planter operation manual.

DEPTH

Remove spring locking pin and adjustment pin from the wheel support. Raise or lower the stem and wheel assembly so the teeth of the wheels are in solid contact with the residue and lightly touching the soil.

The function of the row cleaner is to sweep aside residue and not move soil. When using pre-plant incorporated herbicide, the row cleaner depth should be adjusted to minimize soil disturbance so the cleaner will not reduce the effectiveness of the incorporated herbicide.

ROW CLEANER

1. **DO NOT** move soil, Residue Managers are designed to move crop residue only.
2. **DO NOT** operate planter at slow speeds, ground speed affects how aggressive the spoke wheels are; operate at sufficient speed to maintain good residue flow.
3. **DO NOT** expect 100% of crop residue to be cleared, it is not necessary and would necessitate engaging the soil. The width of path cleared depends on ground conditions, depth setting and ground speed.
4. **DO** expect to see wheels occasionally quit turning, indicates ideal (shallow) setting which is not moving dirt.
5. **DO** expect the potential to bend or break teeth on wheels in excessively rocky conditions.
6. **DO** adjust planter frame height and drawbar correctly. Very important to ensure planter unit will follow ground contours properly.
7. **DO** adjust planter row unit down pressure kit correctly to prevent excessive depth.
8. **DO** expect finely tilled/soft soils to require adjustment due to lack of resistance, the wheel must turn to move residue.
9. **DO** expect more adjustments to be required in finely tilled or soft soils. In these conditions, the planter may lose flotation requiring adjustment of the residue manager to shallower positions.

MAINTENANCE

After a few hours use, check all bolts to make sure they are tight.

BEARING ASSEMBLY AND LUBRICATION

Practice Safety

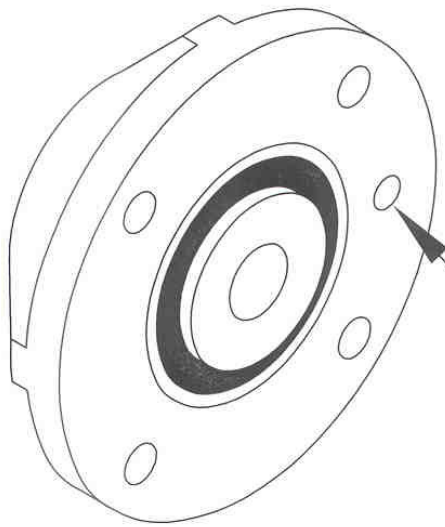
Understand and practice safe service procedures before doing work. Follow ALL the operating, maintenance and safety information in the equipment operator manual. Clear the area of bystanders, especially small children, when performing any maintenance or adjustments. Keep work area clean and dry. Use adequate lighting for the job. Use only tools, jacks and hoists of sufficient capacity for the job.

Never lubricate, service, or adjust machine while it is moving. Keep hands, feet, and clothing from power-driven moving and rotating parts. Disengage all power and operate controls to relieve pressure. Lower equipment to the ground and stop the engine. Remove the key. Wait for all moving parts to stop before servicing, adjusting, repairing or unplugging.

Securely support any machine elements with blocks or safety stands that must be raised for service work.

Keep all parts in good condition and properly installed. Fix damaged equipment immediately. Replace worn or broken parts. Remove any buildup of grease, oil, or debris. Make sure all guards are in place and properly secured when maintenance work is completed.

Assembly

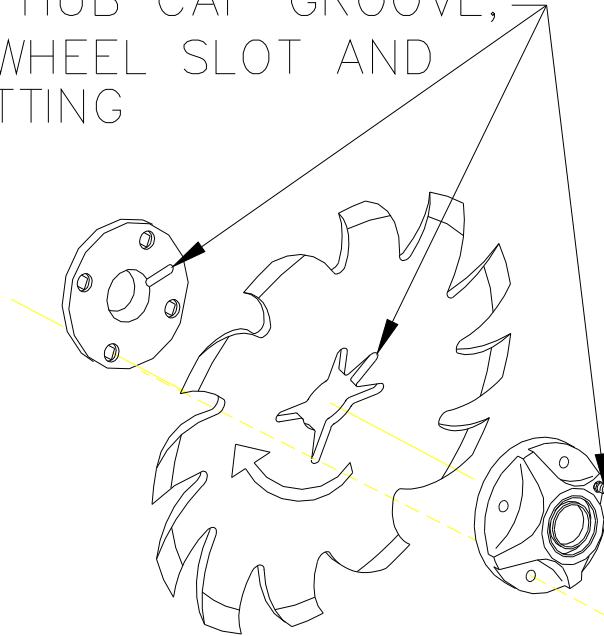


ALIGN GREASE
FITTING HOLES.

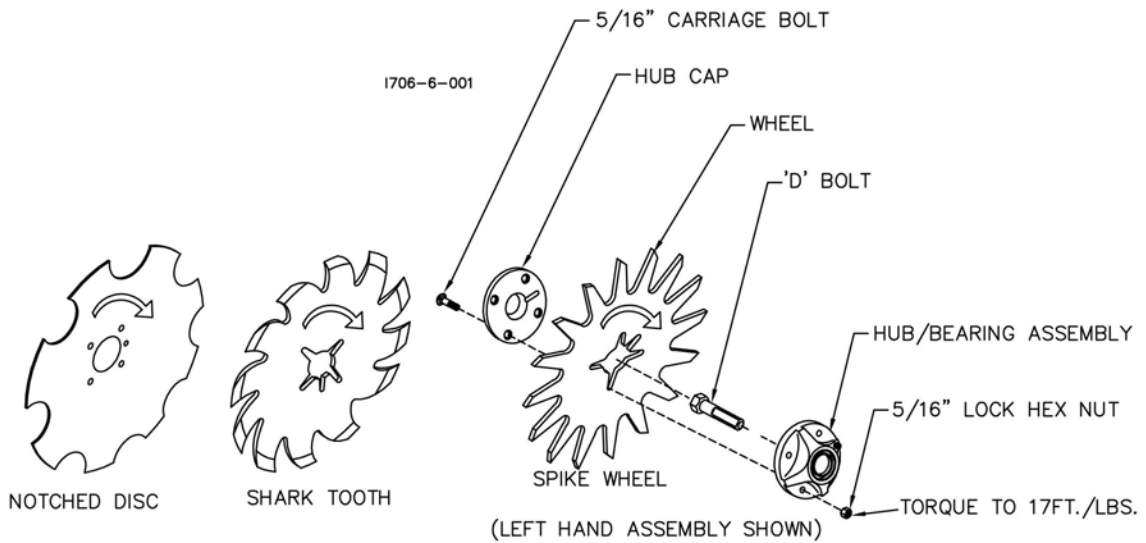
I190-1

MAINTENANCE

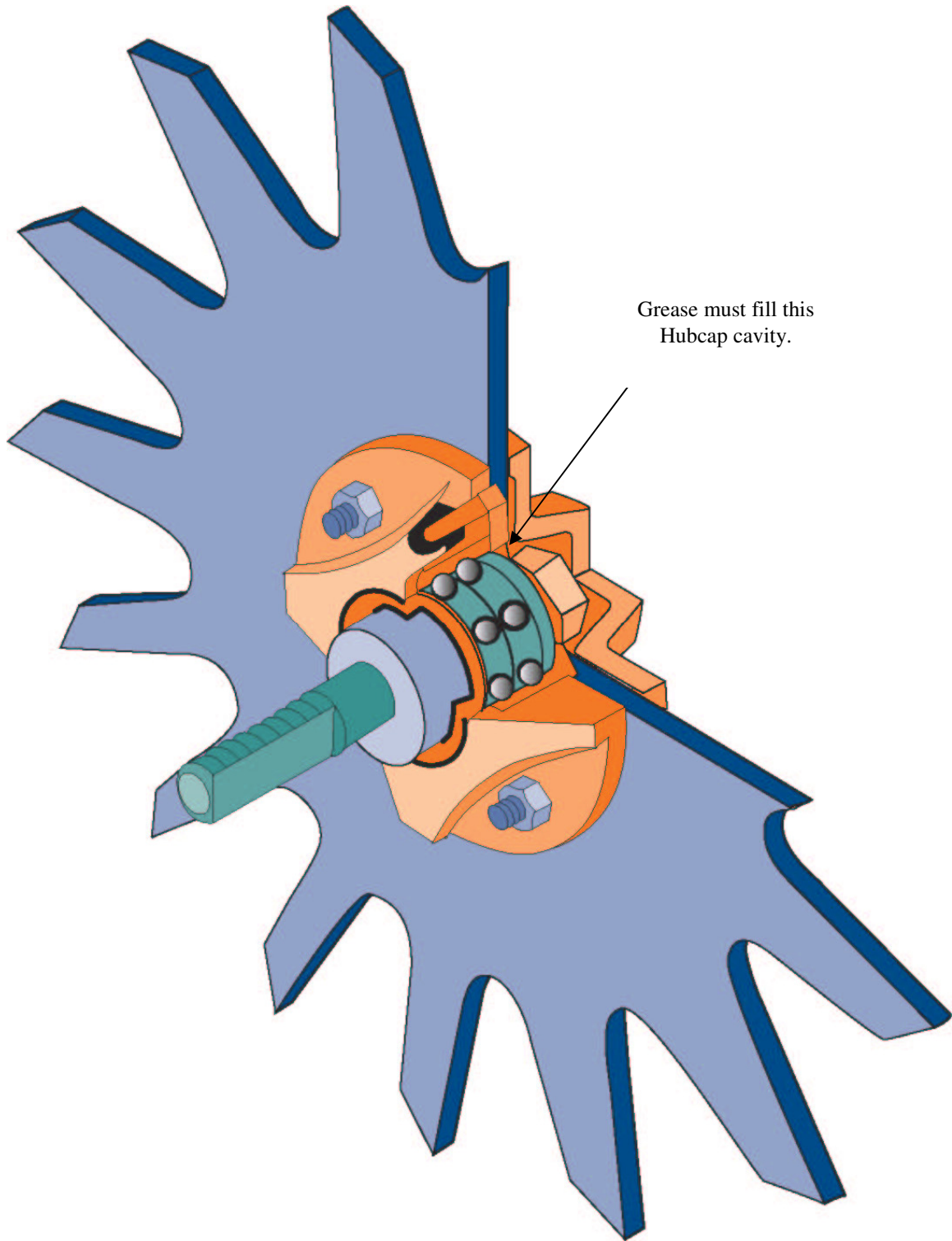
ALIGN THE HUB CAP GROOVE,
WITH THE WHEEL SLOT AND
GREASE FITTING



NOTE: Be certain to align the grease fitting with the slot in the wheel and the hubcap so that the grease can flow freely.



MAINTENANCE



MAINTENANCE

Lubrication



CAUTION: To help prevent serious injury or death to you or others caused by unexpected movement, service machine on a level surface. Lower machine to ground or sufficiently lock or block raised machine before servicing. If machine is connected to tractor, engage parking brake and place transmission in "PARK", shut off engine and remove key. If machine is detached from tractor, block wheels and use shop stands to prevent movement.



CAUTION: Do not clean, lubricate, or adjust machine while in motion.

Use grease based on NLGI consistency numbers and the expected air temperature range during the service interval.

Use a **multi-purpose polyurea, water resistant, moderate speed, and NLGI grade #2** grease.

Other greases may be used if they meet the following **NLGI Performance**

IMPORTANT: Some types of grease thickener are not compatible with others. Consult your grease supplier before mixing different types of grease.

Alternative Lubricants

Conditions in certain geographical areas may require special lubricants and lubrication practices which do not appear in the operator's manual. If there are any questions, consult Yetter Manufacturing Co. to obtain latest information and recommendation.

PART #	DESCRIPTION	OUNCES OF GREASE
2967-404	13" TAPER TOOTH R.M. WHEEL	1.12 OZ
2967-602	13" SHARK TOOTH R.M. WHEEL	1.12 OZ
2967-186	FLOATER WHEEL KIT W/R.M. WHEEL	2.08 OZ
	BEVEL R.M. WHEEL W/ FLOATER WHEEL KIT	2.40 OZ

Storing Lubricants

Your machine can operate at top efficiency only if clean lubricants are used.

Use clean containers to handle all lubricants.

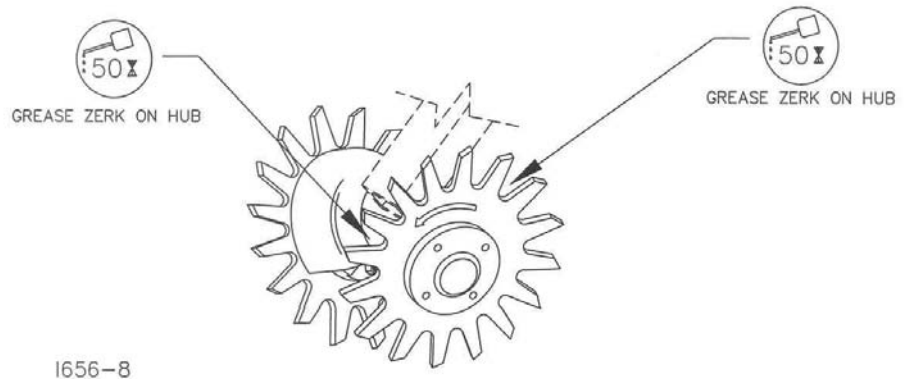
Store them in an area protected from dust, moisture and other contaminants.

MAINTENANCE

Lubrication Symbols

 Lubricate with grease at hourly interval indicated on symbol.

Lubrication Intervals



IMPORTANT: The recommended service intervals are based on normal conditions; severe or unusual conditions may require more frequent lubrication.

Perform each lubrication and service procedure at the beginning and end of each season.

Clean grease fittings before using grease gun, to avoid injecting dirt and grit into the bearing. Replace any lost or broken fittings immediately. If a fitting fails to take grease, remove and clean thoroughly, replace fitting if necessary. Also check for failure of adjoining parts.

BEARING REPLACEMENT INSTALLATION

1. When assembling the spoke wheels, bearing assembly and hubcap, be sure to align the grease transfer hole in the spoke wheel with the groove in the hubcap and hole in the hub to allow grease passage.
2. Assemble the wheels, hubs and caps
3. Grease the wheel/hub/bearing assembly.

MAINTENANCE

Storing the Equipment

Store the machine in an area away from human activity

Store machine in RAISED position.

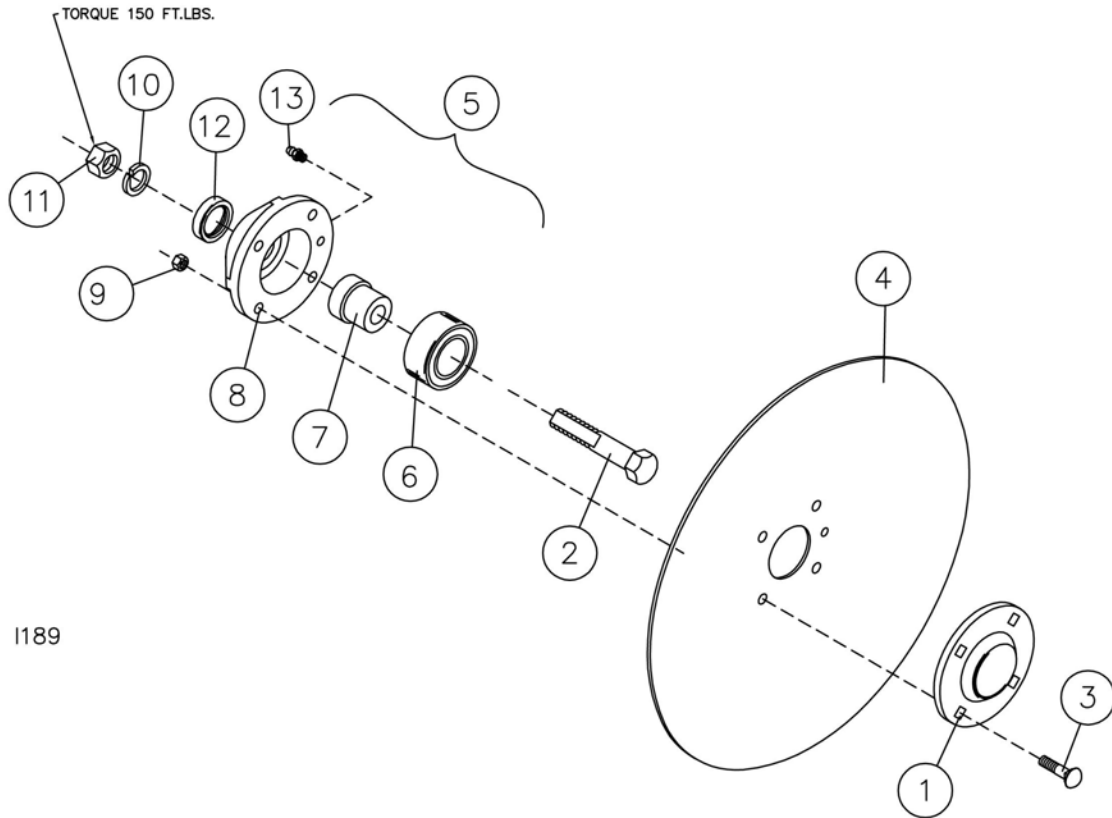
Install service locks on all wheel cylinders.

At the end of the season, the machine should be thoroughly inspected and prepared for storage. Repair or replace any worn or damaged components to prevent down time at the start of the next season. Store machine under cover with all parts in operating condition.

- Clean machine thoroughly to remove all dirt, debris and crop residue, which would hold moisture and cause rusting.
- Inspect machine for worn or broken parts. See your Yetter Farm Equipment dealer during the off-season so that parts or service can be acquired when machine is not needed in the field.
- Lubricate bearings as outlined in the Lubrication section
- Paint all parts which are chipped or worn and require repainting.
- Store machine in a clean, dry place with the planting unit out of the sun.
- If the machine cannot be stored inside, cover with a waterproof tarpaulin and tie securely in place.
- Do not allow children to play on or around the machine

PARTS IDENTIFICATION

4 BOLT TRASHMASTER DISC ASSEMBLY

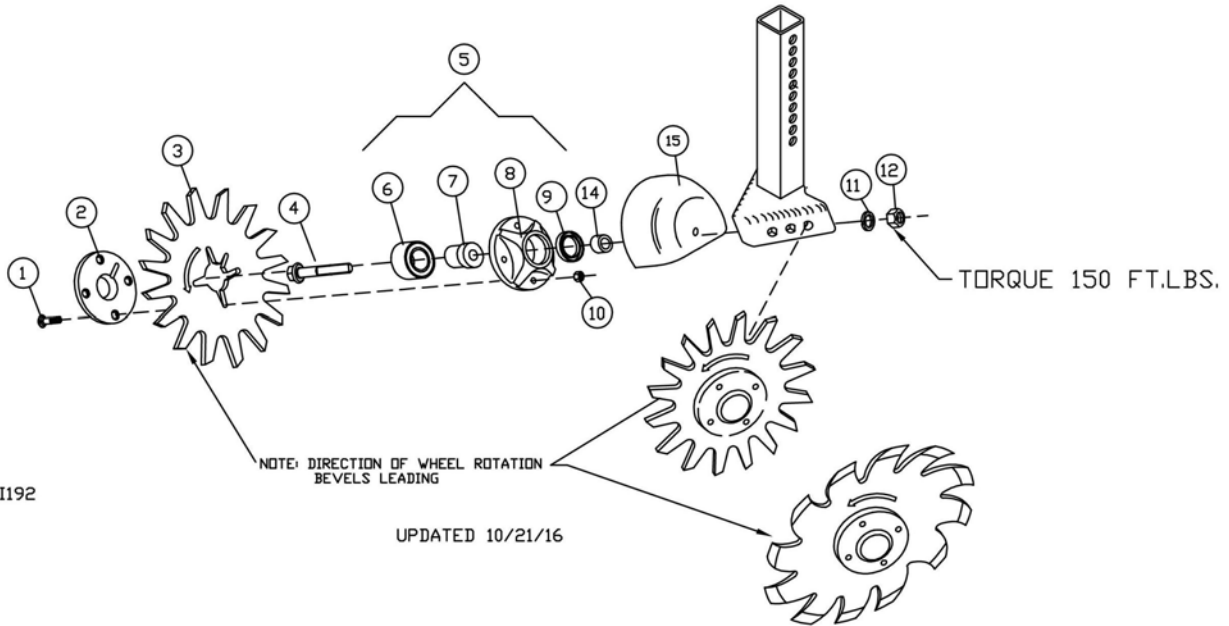


UPDATED 10/21/16

2965 SERIES FURROWER DISC ASSEMBLY

Key	Qty.	Part No.	Description
1	1	2965-352-DISC	Hub Cap Casting, 4 Bolt, Black
2	1	2570-741	5/8-11 x 3-1/2" 'D' Bolt Gr. 5 ZP
3	4	2505-207	5/16-18 x 1-1/4" Car. Bolt Gr. 5 ZP
4	1	2571-181	.098 x 12" Disc, 4 Bolt
	1	6001-495	.098 x 13.62" Notch Disc, 4 Bolt
5	1	2965-128	Hub and Bearing Assy., 4 Bolt
6	1	2570-594	Bearing, 2 Row, NTN #DF0654LU
7	1	2570-715	Bearing Insert, Trashmaster
8	1	2965-351	Hub Casting, Machined, 4 Bolt
9	4	2520-206	5/16-18 Flange Lock Nut
10	1	2525-451	5/8 Med. Lockwasher ZP
11	1	2520-452	5/8-11 Hex Nut ZP
12	1	2550-069	Seal, Triple Lip, NTI# 1812-5
13	1	2533-110	1/4-28 Zerk Straight Self-Tap

PARTS IDENTIFICATION

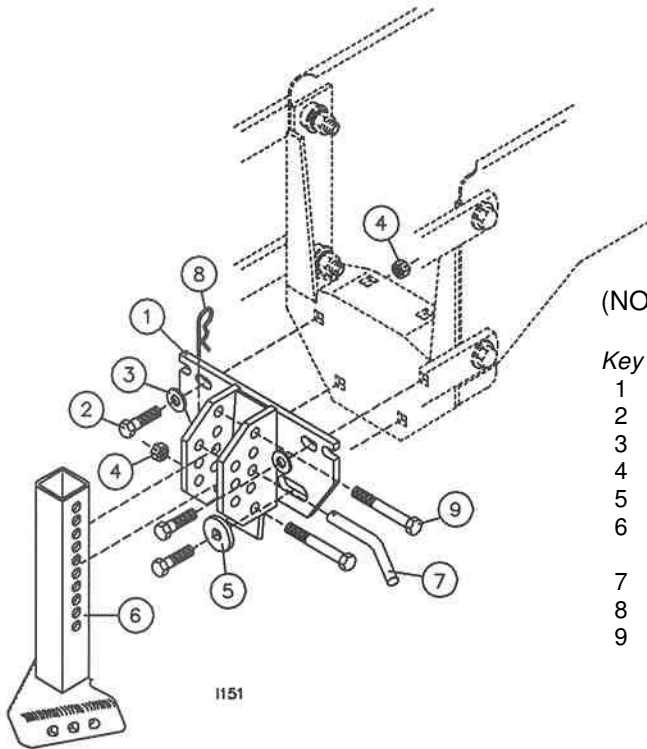


I192

2967 SERIES RESIDUE MANAGER ASSEMBLY

Key	Qty.	Part No.	Description
1	4	2505-208	5/16-18 x 1-1/2" Car. Bolt Gr. 5 ZP
2	1	2965-352	Hub Cap Casting, 4 Bolt, Black
3	1	2967-404	13" Taper Tooth Spoke Wheel
	1	2967-602	13" Shark Tooth Wheel
	1	6200-350	13" Bevel Wheel L.H.
	1	6200-351	13" Bevel Wheel R.H.
4	1	2570-742	D-Bolt, Flange, 5/8-11 x 4" Gr. 8 ZP
5	1	2965-128	Hub and Bearing Assy., 4 Bolt
6	1	2570-594	Bearing, 2 Row, NTN #DF0654LU
7	1	2570-715	Bearing Insert, Trashmaster
8	1	2965-351	Hub Casting, Machined, 4 Bolt
9	1	2550-069	Seal, Triple Lip, NTI# 1812-5
10	4	2520-206	5/16-18 Flange Lock Nut
11	1	2525-451	5/8 Med. Lockwasher ZP
12	1	2520-452	5/8-11 Hex Nut ZP
13	1	2533-110	1/4-28 Zerk Straight Self-Tap (Not Shown)
14	1	2967-302	Spacer, 3/4", ZYD
15	1	2967-336	R.M. Shield, Painted, w/Hole

PARTS IDENTIFICATION



2965-015
2965-020
2967-015

FITS YETTER, JD 7000, 7200, 1700 Series
KINZE, NEW IDEA, WHITE 6100

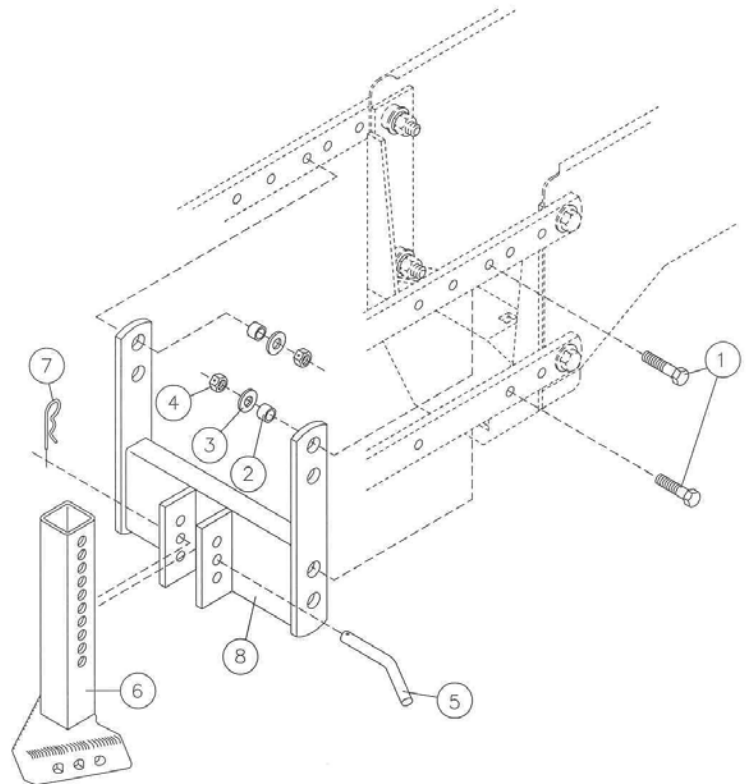
(NOTE: See additional mounting information on page 4)

Key	Qty.	Part No.	Description
1	1	2967-211	Mounting Bracket, Trimmed, W.A.
2	3	2502-294	1/2-13 x 1-1/2" HHCS Gr. 5 ZP
3	2	2526-355	1/2" Flatwasher, Hardened, P.C.
4	5	2520-357	1/2-13 Lock Hex Nut ZP
5	1	2526-402	9/16 ID x 1-3/4 OD x 1/4" Ma. Bu.
6	1	2967-200	Residue Manager Stem W.A.
7	1	2965-200	Furrowing Blade Mtg. Brkt. W.A.
8	1	2965-305	Pin, Furrowing Attachment ZP
9	2	2570-448	1/8" Std. Hairpin Cotter ZP
		2502-316	1/2-13 x 3-1/2" HHCS Gr. 5 ZP

2965-108
TRASHMASTER, WHITE 5100
2967-108
RESIDUE MANAGER, WHITE 5100

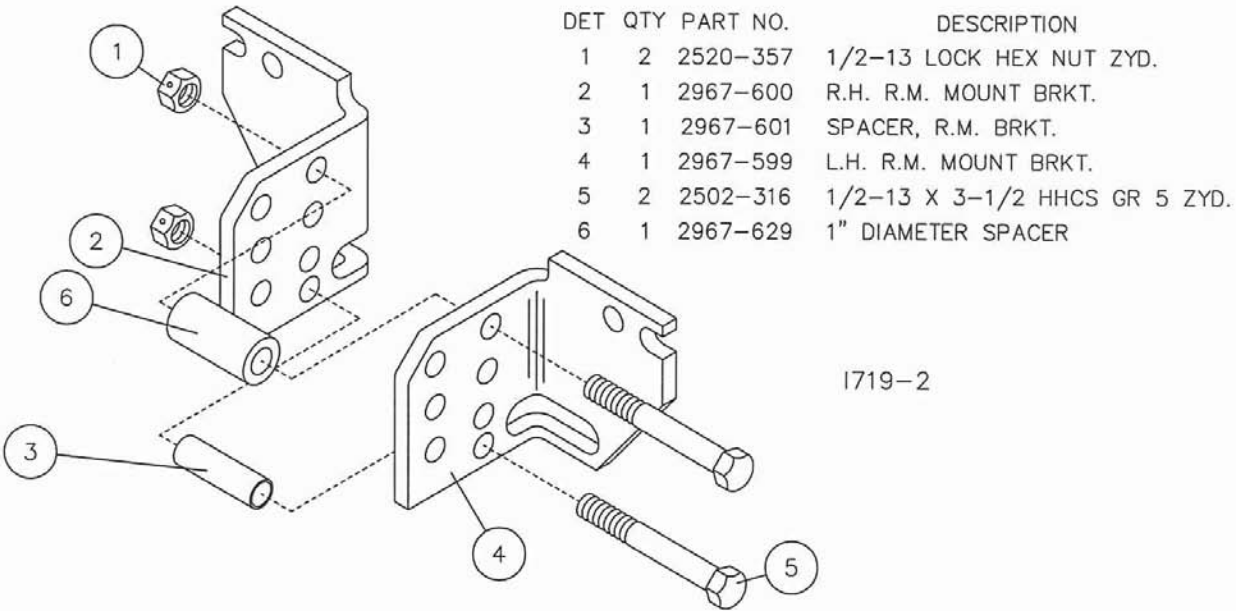
Key	Qty.	Part No.	Description
1	4	2502-317	1/2-13 x 1-3/4" HHCS Gr. 5 ZP
2	4	2965-321	Bushing, 1/2", White, ZYD
3	4	2526-352	1/2" SAE Flatwasher ZP
4	4	2520-357	1/2-13 Hex Lock Nut ZP
5	1	2965-305	Pin, Furrowing Attachment ZYD
6	1	2967-200	Residue Manager Stem W.A.
7	1	2965-205	Furrow Bld. Mtg. Bracket White
7	1	2570-448	1/8 Std. Hairpin Cotter ZP
8	1	2965-204	Mount Brkt. W.A., White

1633



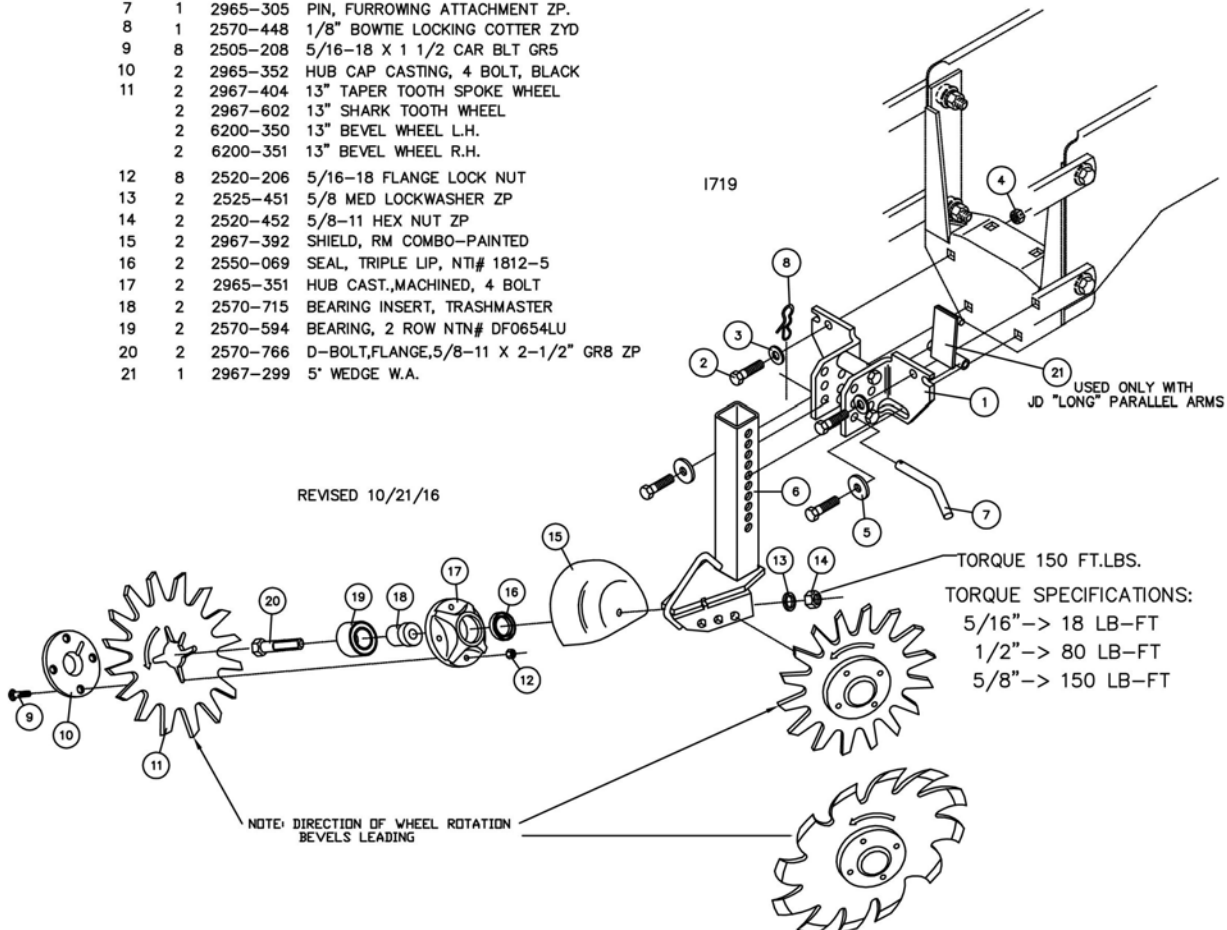
PARTS IDENTIFICATION

2967-195 - R.M. BRACKET ASSEMBLY

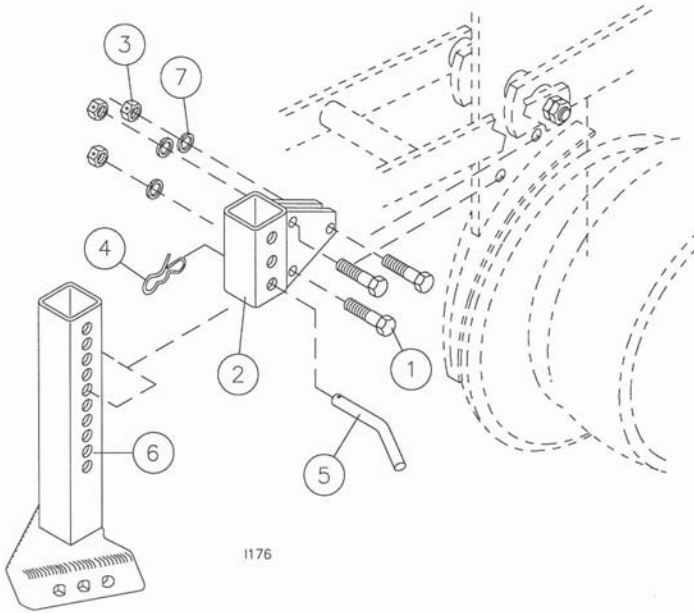


2967-048 - NARROW ROW UNIT MOUNTED R.M.

KEY	QTY.	PART NO.	DESCRIPTION
1	1	2967-195	R.M. BRACKET ASSEMBLY
2	4	2502-294	1/2-13 X 1 1/2" HHCS GR.5 ZP.
3	2	2526-355	1/2" FLATWASHER, HARDENED, P.C.
4	4	2520-357	1/2-13 LOCK HEX NUT ZP.
5	2	2527-330	1/2 ID X 1 1/2 OD X 7 GA MA BU ZP
6	1	2967-262	NARROW R.M. STEM WA
7	1	2965-305	PIN, FURROWING ATTACHMENT ZP.
8	1	2570-448	1/8" BOWTIE LOCKING COTTER ZYD
9	8	2505-208	5/16-18 X 1 1/2 CAR BLT GR5
10	2	2965-352	HUB CAP CASTING, 4 BOLT, BLACK
11	2	2967-404	13" TAPER TOOTH SPOKE WHEEL
	2	2967-602	13" SHARK TOOTH WHEEL
	2	6200-350	13" BEVEL WHEEL L.H.
	2	6200-351	13" BEVEL WHEEL R.H.
12	8	2520-206	5/16-18 FLANGE LOCK NUT
13	2	2525-451	5/8 MED LOCKWASHER ZP
14	2	2520-452	5/8-11 HEX NUT ZP
15	2	2967-392	SHIELD, RM COMBO-PAINTED
16	2	2550-069	SEAL, TRIPLE LIP, NTI# 1812-5
17	2	2965-351	HUB CAST.,MACHINED, 4 BOLT
18	2	2570-715	BEARING INSERT, TRASHMASTER
19	2	2570-594	BEARING, 2 ROW NTN# DF0654LU
20	2	2570-766	D-BOLT,FLANGE,5/8-11 X 2-1/2" GR8 ZP
21	1	2967-299	5" WEDGE W.A.



PARTS IDENTIFICATION

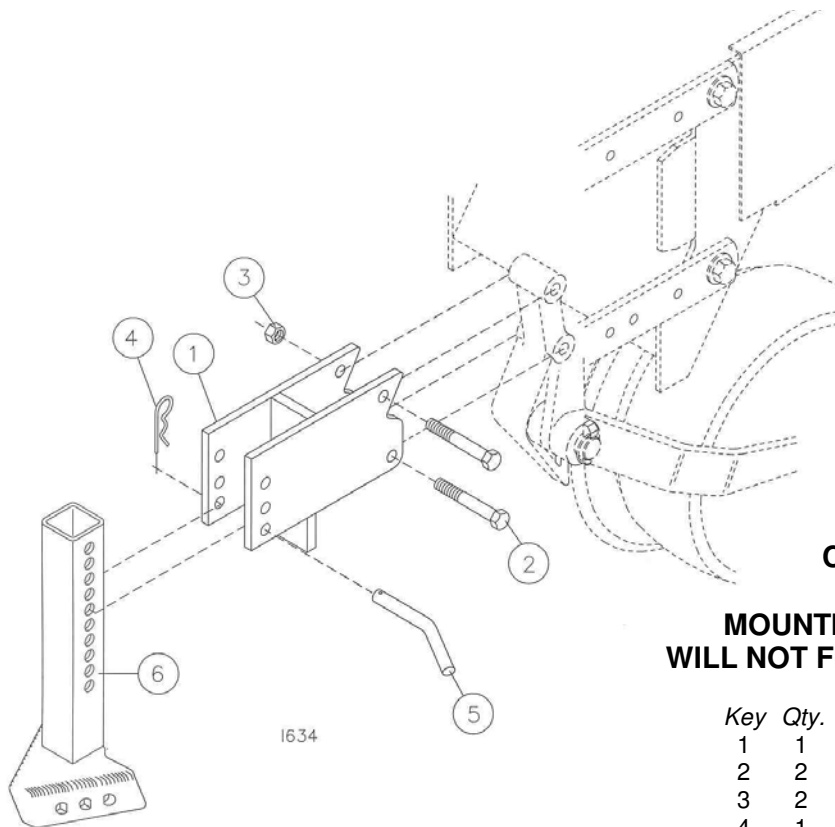


2967-109 MONOSEM ROW UNIT

UPDATED 03/04/09

2965-124 2967-109 MONOSEM UNIT

Key	Qty.	Part No.	Description
1	3	2502-245	3/8-16 x 1-3/4 HHCS Gr. 5 ZP
2	1	2967-245	Monosem Mount Bracket W.A.
3	3	2520-251	3/8-16 Hex Nut ZP
4	1	2570-448	1/8 Std. Hairpin Cotter ZP
5	1	2965-305	Pin, Furrowing Attachment, ZYD
6	1	2967-200	Residue Manager Stem W.A.
	1	2965-200	Furrowing Blade Mtg. Brkt. W.A.
7	3	2525-251	3/8 Med. Lockwasher ZP

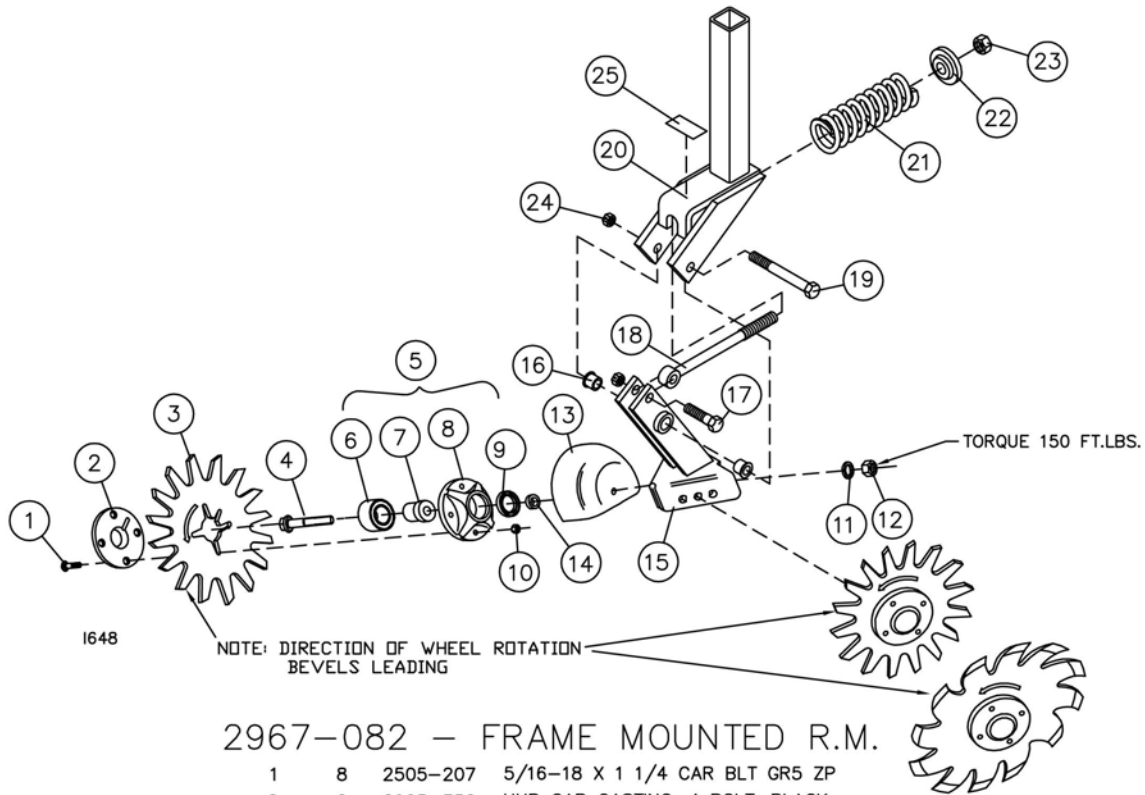


2965-021 2965-106 2967-106 CASE 800/900/950/955/1200

MOUNTING HARDWARE FOR CASE -IH 800 WILL NOT FIT 1ST YEAR IHC PRODUCTION (1981)

Key	Qty.	Part No.	Description
1	1	2965-203	Furrower Mounting Bracket, 800
2	2	2502-316	1/2-13 x 3-1/2" HHCS Gr. 5 ZP
3	2	2520-357	1/2-13 Lock Hex Nut ZP
4	1	2570-448	1/8 Std. Hairpin Cotter ZP
5	1	2965-305	Pin, Furrowing Attachment, ZYD
6	1	2966-272	Residue Manager Stem W.A.
	1	2965-200	Furrowing Blade Mtg. Brkt. W.A.

PARTS IDENTIFICATION



2967-082 - FRAME MOUNTED R.M.

1	8	2505-207	5/16-18 X 1 1/4 CAR BLT GR5 ZP
2	2	2965-352	HUB CAP CASTING, 4 BOLT, BLACK
3	2	2967-404	13" TAPER TOOTH SPOKE WHEEL
	2	2967-602	13" SHARK TOOTH WHEEL
	2	6200-350	13" BEVEL WHEEL L.H.
	2	6200-351	13" BEVEL WHEEL R.H.
4	2	2570-742	D-BOLT, FLANGE, 5/8-11 X 4" GR.8 ZYD
5	2	2965-128	HUB AND BEARING ASS'Y., 4 BOLT
6	2	2570-594	BEARING, 2 ROW NTN# DF0654LU
7	2	2570-715	BEARING INSERT, TRASHMASTER
8	2	2965-351	HUB CAST., MACHINED, 4 BOLT
	2	2533-110	1/4-28 ZERK STRAIGHT SELF-TAP (NOT SHOWN)
9	2	2550-069	SEAL, TRIPLE LIP, NTN# 1812-5
10	8	2520-206	5/16-18 FLANGE LOCK NUT
11	2	2525-451	5/8 MED LOCKWASHER ZP
12	2	2520-452	5/8-11 HEX NUT ZP
13	2	2967-336	R.M. SHIELD, PAINTED, W. HOLE
14	2	2967-302	SPACER, 3/4" ZYD
15	1	2967-267	LOWER PIVOT ARM W.A.
16	2	2967-483	NYLON INSERT BUSHING
17	1	2502-332	5/8-11 X 2-1/4 HHCS GR. 5 ZP
18	1	2920-324	PUSH ROD, 9 3/16" EYE BOLT, ZP
19	1	2502-334	5/8-11 X 4-1/2 HHCS GR 5 ZP
20	1	2967-268	UPPER PIVOT ARM W.A.
	1	2910-311	SPRING
22	1	2910-302	2910 SPRING BUSHING
23	1	2520-515	3/4-10 LOCK HEX NUT ZP
24	2	2520-459	5/8-11 LOCK HEX NUT ZP
25	1	2565-179	YETTER DECAL 1" X 3"

REVISED 10/27/16

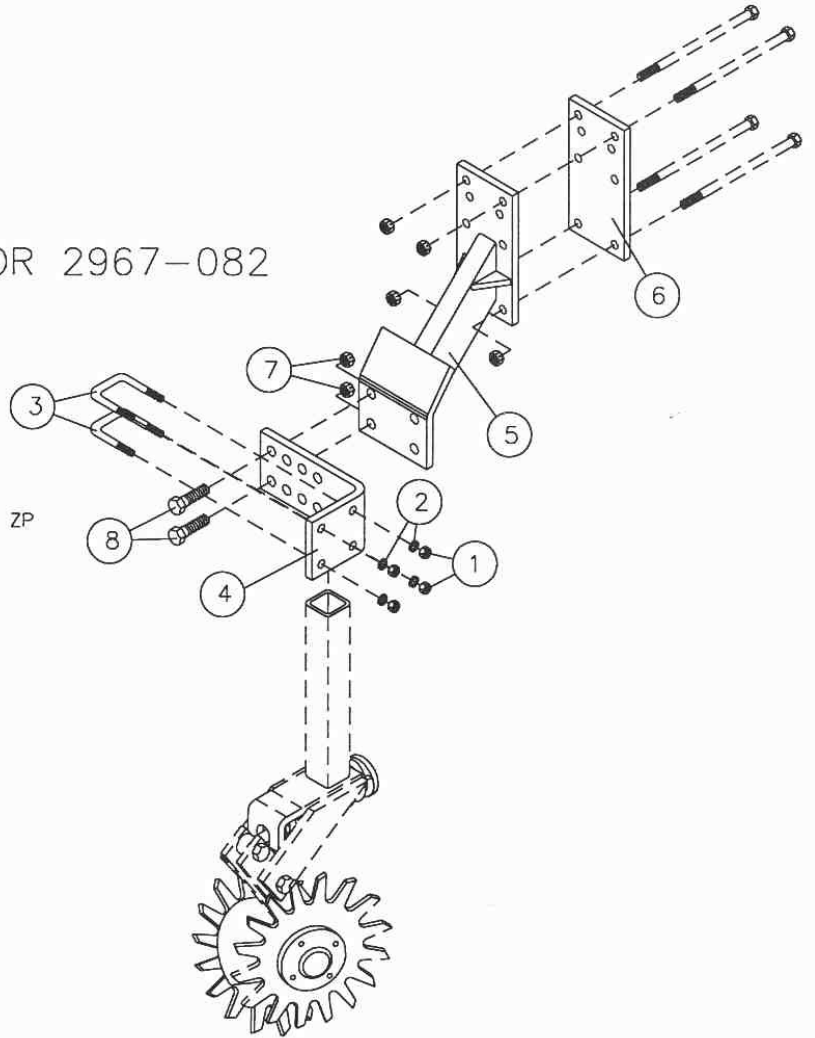
PARTS IDENTIFICATION

2967-083 — OFFSET CLAMP KIT FOR 2967-082

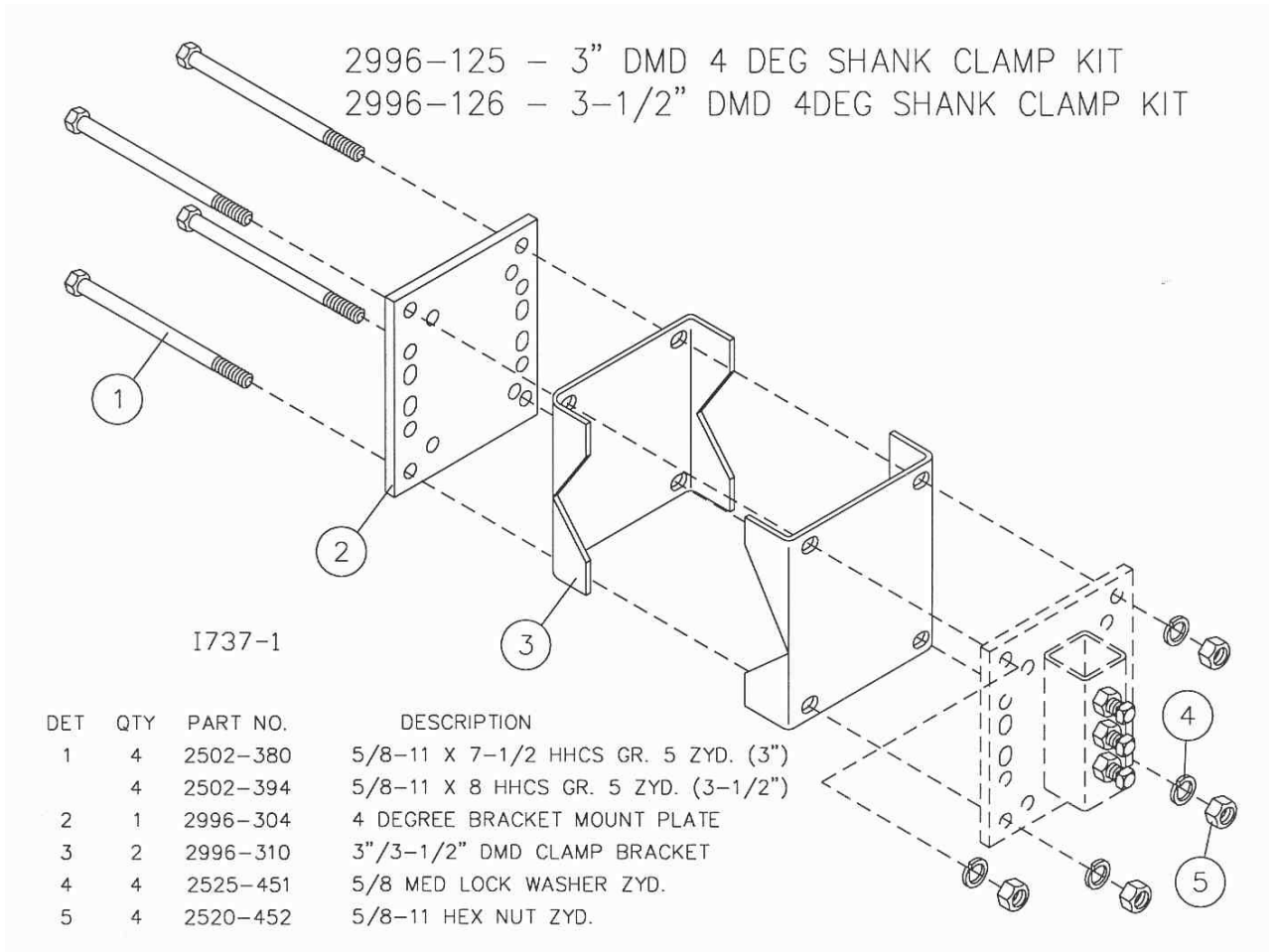
1	4	2520-352	1/2-13 HEX NUT ZP
2	4	2525-352	1/2 MED LOCKWASHER ZP
3	2	2570-565	1/2 X 2 X 3 U-BOLT, ZYD
4	1	2967-490	HORIZONTAL ADJ. PLATE
5	1	2967-269	FRAME MOUNT W.A.
6	1	2967-489	4", 6", 7" CLAMP PLATE
7	2	2520-459	5/8-11 LOCK HEX NUT ZP
8	2	2502-332	5/8-11 X 2-1/4 HHCS GR. 5 ZP

REVISED 08/06/08

1649

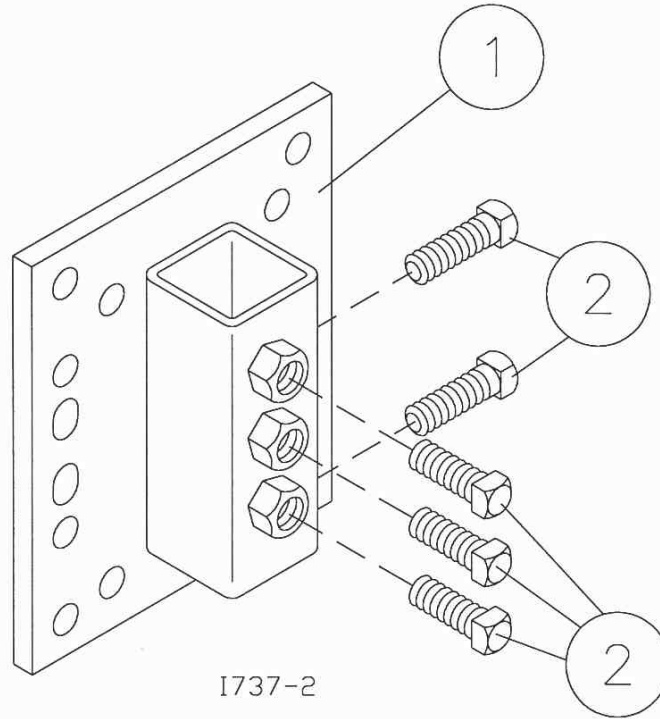


PARTS IDENTIFICATION



PARTS IDENTIFICATION

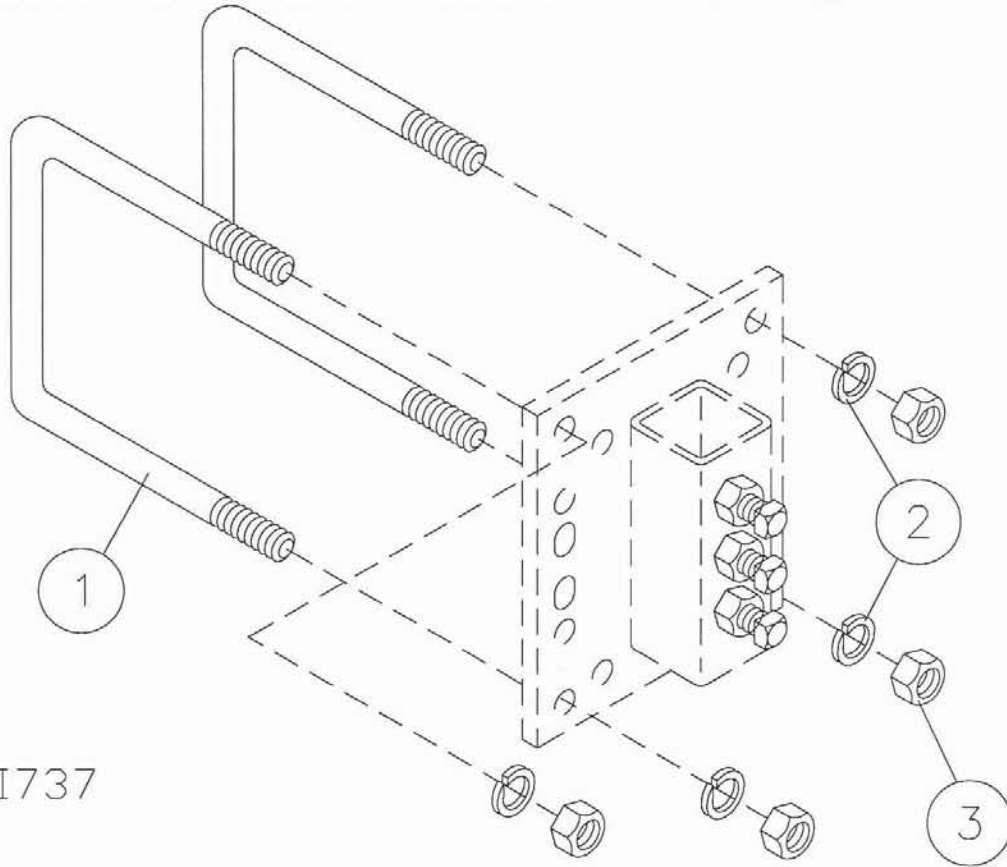
2967-077 – UNIVERSAL MOUNT KIT



DET	QTY	PART NO.	DESCRIPTION
1	1	2967-289	FRAME MOUNTED R.M. MOUNT BRACKET
2	5	2503-379	5/8-11 X 1 SQ. HCPSS GR. 5 ZYD.

PARTS IDENTIFICATION

- 2996-120 - 2-1/2" 4 DEG SHANK U-BOLT KIT
- 2996-121 - 4" 4 DEG SHANK U-BOLT KIT
- 2996-122 - 5" 4 DEG SHANK U-BOLT KIT
- 2996-123 - 7X7 4 DEG SHANK U-BOLT KIT
- 2996-124 - 5X7 4 DEG SHANK U-BOLT KIT
- 2996-127 - 3" 4 DEG SHANK U-BOLT KIT
- 2996-128 - 4X6 4 DEG SHANK U-BOLT KIT
- 2996-129 - 2X6 4 DEG SHANK U-BOLT KIT



I737

DET	QTY	PART NO.	DESCRIPTION
1	2	2570-758	5/8 X 2-1/2 X 4 U-BOLT ZYD. (2996-120)
	2	2503-379	5/8 X 4 X 5-1/2 U-BOLT ZYD. (2996-121)
	2	2570-759	5/8 X 5 X 6-1/2 U-BOLT ZYD. (2996-122)
	2	2570-626	5/8 X 7 X 9 U-BOLT ZYD. (2996-123)
	2	2570-735	5/8 X 7 X 7 U-BOLT ZYD. (2996-124)
	2	2570-602	5/8 X 3 X 4-1/2 U-BOLT ZYD. (2996-126)
	2	2570-765	5/8 X 6 X 5-1/2 U-BOLT ZYD. (2996-127)
	2	2570-130	5/8 X 6 X 3-1/2 U-BOLT ZYD. (2996-128)
2	4	2525-451	5/8 MED LOCK WASHER ZYD.
3	4	2520-452	5/8-11 HEX NUT ZYD.

Our name Is getting known

Just a few years ago, Yetter products were sold primarily to the Midwest only. Then we embarked on a program of expansion and moved into the East, the South, the West and now north into Canada. We're even getting orders from as far away as Australia and Africa.

So, when you buy Yetter products . . .you're buying a name that's recognized. A name that's known and respected. A name that's become a part of American agriculture and has become synonymous with quality and satisfaction in the field of conservation tillage.

Thank you.

YETTER MANUFACTURING CO.

Colchester, IL 62326-0358 ☎ 309/776-4111

Toll Free 800/447-5777

Fax 309/776-3222

Website: www.yetterco.com

E-mail: info@yetterco.com